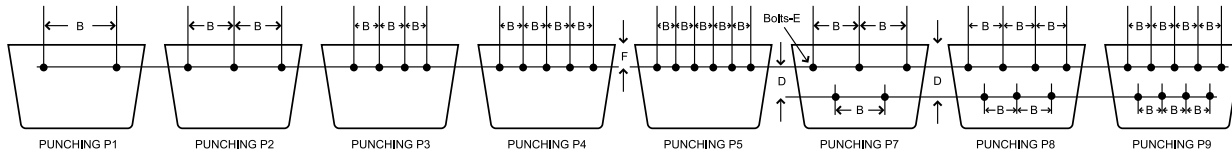


BUCKET PUNCHING FOR BELTS



TYPES HF, HFO, MF AND LF CONTINUOUS ELEVATOR BUCKETS FOR BELTS									
BUCKET SIZE, INCHES			Punching	Belt Width Inches	INCHES				
L - Length	P - Projection	D - Depth			B	D	E	F	
8	5	7-3/4	P7	9-10	3	1	1/4	3-3/8	
8	5	8-1/2	P7	9-10	3	1	1/4	3-3/4	
9	6	9-1/4	P7	10	3	1	1/4	4-1/8	
10	5	7-3/4	P7	11-12	3-1/2	1	5/16	3-3/8	
10	5	8-1/2	P7	11-12	3-1/2	1	5/16	3-3/4	
10	6	9-1/4	P7	11-12	3-1/2	1	5/16	4-1/8	
10	6	10	P7	11-12	3-1/2	1	5/16	4-1/2	
10	7	11-5/8	P7	11-12	3-1/2	1	5/16	5-5/16	
10	7	12-1/2	P7	11-12	3-1/2	1	5/16	5-3/4	
10	8	11-5/8	P7	11-12	3-1/2	1	5/16	5-5/16	
11	6	9-1/4	P7	12	4	1	5/16	4-1/8	
12	5	7-3/4	P7	13-14	4-1/2	1	5/16	3-3/8	
12	6	9-1/4	P7	13-14	4-1/2	1	5/16	4-1/8	
12	6	10	P7	13-14	4-1/2	1	5/16	4-1/2	
12	7	11-5/8	P7	13-14	4-1/2	1	5/16	5-5/16	
12	7	11-3/4	P7	13-14	4-1/2	1	5/16	5-3/8	
12	7	12-1/2	P7	13-14	4-1/2	1	5/16	5-3/4	
12	8	11-5/8	P7	13-14	4-1/2	1	5/16	5-5/16	
12	8	12-1/2	P7	13-14	4-1/2	1	5/16	5-3/4	
14	7	11-5/8	P8	15-16	4	1	5/16	5-5/16	
14	7	12-1/2	P8	15-16	4	1	5/16	5-3/4	
14	8	11-5/8	P8	15-16	4	1	5/16	5-5/16	
14	8	11-3/4	P8	15-16	4	1	5/16	5-3/8	
14	8	12-1/2	P8	15-16	4	1	5/16	5-3/4	
16	7	11-3/4	P8	18	4-1/2	1	5/16	5-3/8	
16	8	11-5/8	P8	18	4-1/2	1	5/16	5-5/16	
16	8	12-1/2	P8	18	4-1/2	1	5/16	5-3/4	
16	12	17-5/8	P8	18	4-1/2	1	5/16	8-5/16	
16	12	18-5/8	P8	18	4-1/2	1	5/16	8-13/16	
18	8	11-5/8	P8	20	5	1	5/16	5-5/16	
18	10	15	P8	20	5	1	5/16	7	
20	8	11-5/8	P9	22	4	1	5/16	5-5/16	
20	12	17-5/8	P9	22	4	1	5/16	8-5/16	
20	12	18-5/8	P9	22	4	1	5/16	8-13/16	
24	10	11-5/8	P9	26	5	1	5/16	5-5/16	
24	12	17-5/8	P9	26	5	1	5/16	8-5/16	
24	12	18-5/8	P9	26	5	1	5/16	8-13/16	

All plastic Maxi-Tuff MF Buckets that have a depth of 11-1/2", 11-5/8" or 11-3/4" will be punched with a 5-5/16" down dimension (F).

TYPES AA AND TIGER-TUFF INDUSTRIAL CENTRIFUGAL DISCHARGE ELEVATOR BUCKETS FOR BELTS							
NOMINAL BUCKET LENGTH INCHES	Punching	Belt Width Inches	B	D	E	F	
3	P1	4	1-3/8	-	1/4	1	
4	P1	5	2-5/16	-	1/4	1	
5	P1	6	3-3/16	-	1/4	1	
6	P1	7-8	4-3/8	-	1/4	1	
7	P2	8	2-1/2	-	1/4	1	
8	P7	9-10	3	1	1/4	1	
9	P7	10	3	1	1/4	1	
10	P7	11-12	3-1/2	1	5/16	1	
11	P7	12	4	1	5/16	1	
12	P7	13-14	4-1/2	1	5/16	1	
13	P8	14	3-1/2	1	5/16	1	
14	P8	15-16	4	1	5/16	1	
15	P8	16	4	1	5/16	1	
16	P8	18	4-1/2	1	5/16	1	
17	P8	18	4-1/2	1	5/16	1	
18	P8	20	5	1	5/16	1	
19	P9	20	4	1	5/16	1	
20	P9	22	4	1	5/16	1	
21	P9	22	4-1/2	1	5/16	1	
22	P9	24	4-1/2	1	5/16	1	
23	P9	24	5	1	5/16	1	
24	P9	26	5	1	5/16	1	

Other Chain Punches Available. Verify bucket punching before ordering.

