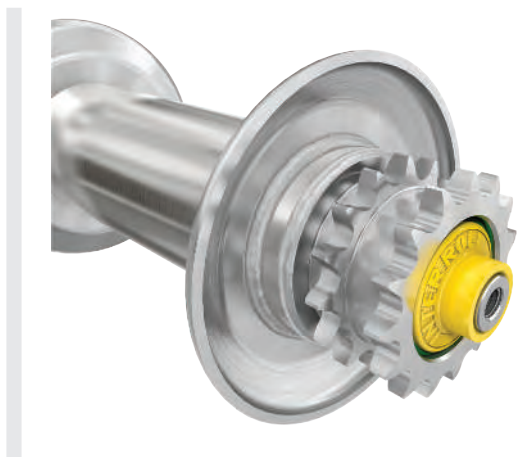




**CONVEYOR ROLLERS
TECHNICAL INFORMATION
FLANGES**

GENERAL TECHNICAL INFORMATION FLANGES

Flanges



Flanges guide materials and prevent their lateral wandering. Circumferential welds ensure a high stability.

Technical data

The number of flanges and the roller pitch has to be selected in such a way that at least two flanges always guide the material at any given time.

Max. reference length	1600 mm
Material	Zinc-plated steel, uncoated steel
Max. number of flanges/rollers	4
Temperature range	Depending on roller series

Design versions

Ø Tube [mm]	Ø Flange, outside d2 [mm]	Flange material thickness s [mm]	Flange width b [mm]
50	75	3	8.5
60	100	3	8.5
80	150	4	18.0
89	150	4	18.0

The following roller series can be delivered with flanges:

- 1200
- 1450
- 1700
- 1700 heavy
- 3500
- 3500 heavy
- 3950

Dimensions

When ordering a roller with flange, always specify the dimensions A to D.

Flange

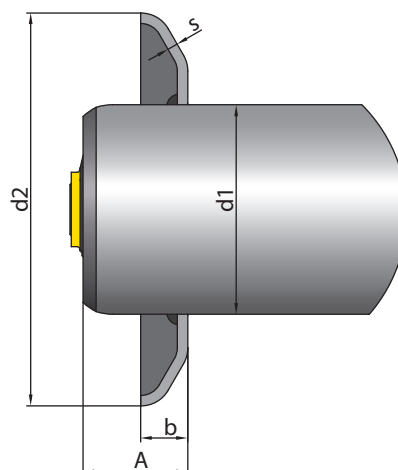


Fig.: Left flange

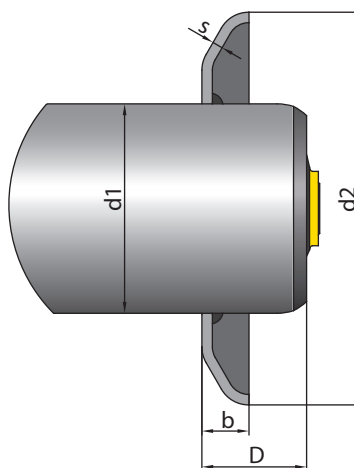


Fig.: Right flange

