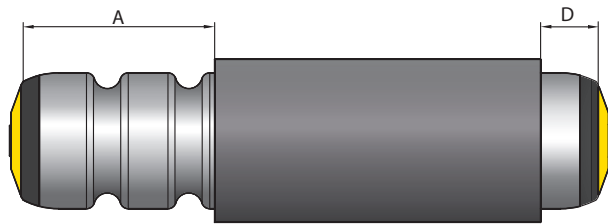




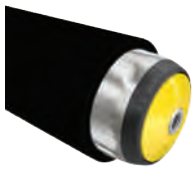
**CONVEYOR ROLLERS
TECHNICAL INFORMATION
PU SLEEVE**

GENERAL TECHNICAL INFORMATION PU SLEEVE

PVC sleeve and 2 grooves



PU sleeve



The PU sleeve ensures a high level of noise reduction, particularly for steel containers, and offers a high level of protection of sensitive conveying goods. An improved conveyance of conveying goods is achieved with the higher coefficient of friction compared with a steel tube. Conveying goods can easily be separated since the larger diameter leads to a higher speed with the same rotational speed. With mechanical stress, e.g. with abrasion, it offers a higher robustness than a PVC sleeve.

Technical data

Tapered rollers cannot be fitted with a PU sleeve.

General technical data	
Min. sleeve length	50 mm
Temperature range	-28 to +80 °C
Material	
Tube	Zinc-plated steel, stainless steel, aluminum
PU sleeve	<ul style="list-style-type: none"> • Polyurethane, RAL9005 (jet black), gloss • Softener-free • Silicone and halogen-free • FDA-compliant • RoHS-compliant • Non-conductive • Oil or gasoline-resistant
Sleeve hardness	75 + 5 Shore A (at 20 °C); the hardness increases at lower temperatures

Design versions

Ø Tube [mm]	Sleeve material thickness [mm]
50	2
51	2

With the lower elasticity, the PU sleeve cannot be applied to any other tube diameters or tubes with welded-on elements.

The PU sleeve is not glued onto the conveyor roller. The conveyor roller is pushed into the sleeve widened with compressed air by using a pressing machine. Then the sleeve is cut to the length of the tube or to the specified dimension. Rollers with PU sleeve are always designed with an antistatic element. The PU sleeve is not antistatic.