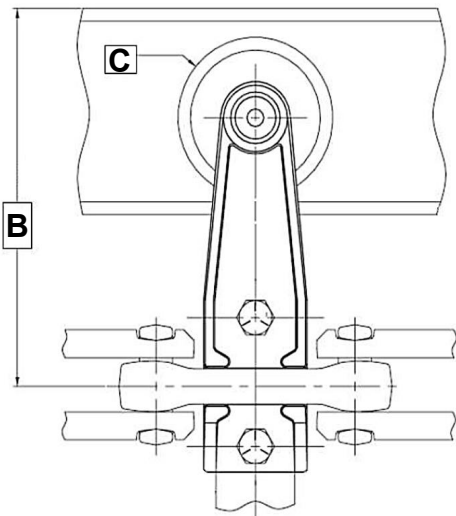
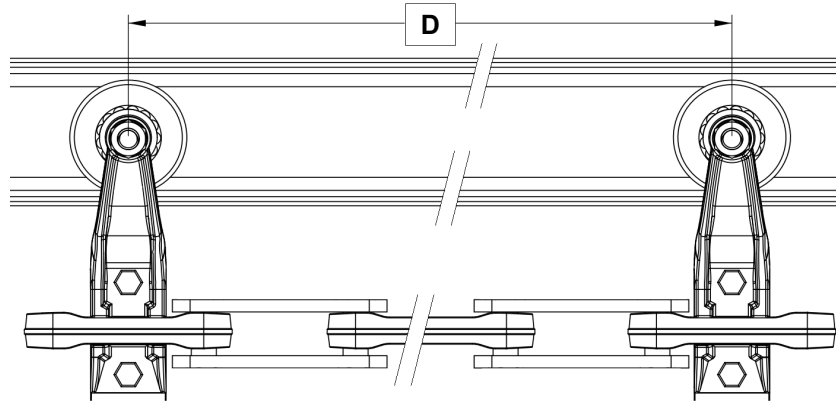
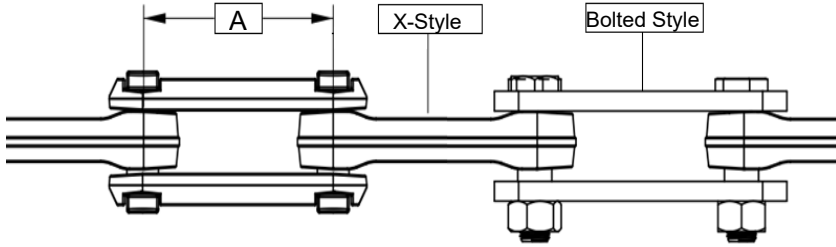
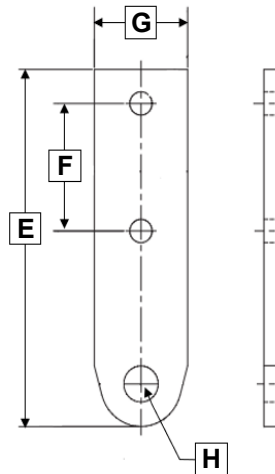


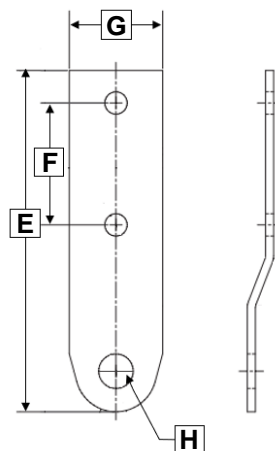
# OVERHEAD CHAIN IDENTIFICATION



### "C" Attachments



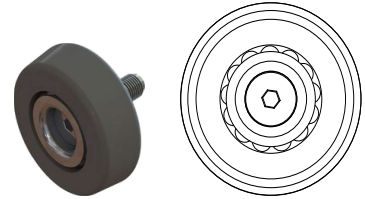
### "H" Attachments



Chain Specifications	
Chain Pitch ("A")	
Chain Style	(X Style) or (Bolted Style)
Plating Finish	
Trolley Specifications	
Drop ("B")	
Wheel Diameter ("C")	
Wheel Style	
Trolley Spacing ("D")	
Attachment Specifications	
Attachment Style	(C-ATT) or (H-ATT)
Overall length ("E")	
Bolt Hole Spacing ("F")	
Width ("G")	
Hole Diameter ("H")	

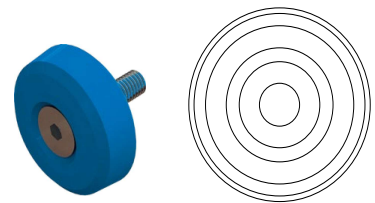
### STYLE GB

Gray ball bearing wheels with stainless races



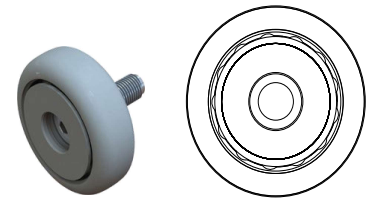
### STYLE PB

Blue non ball bearing plastic wheel



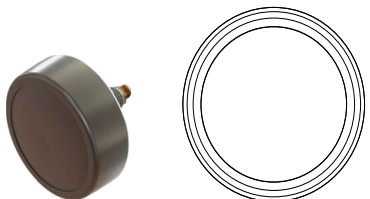
### STYLE GC

Gray caged ball bearing wheel



### STYLE PL

Plated ball bearing steel wheel



### STYLE PT

Pipe track wheel

