

ENGINEERED CLASS CHAIN



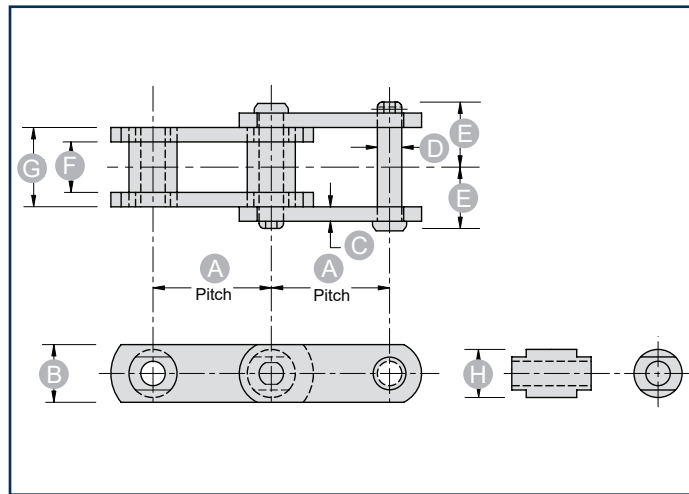
HEADQUARTERS 514.886.5270

12985 Rue Brault, Mirabel Quebec, Canada J7J 0W2

UNIKINGCANADA.COM

Steel Bushed

Engineering Class Chains are designed to withstand rigorous operating conditions across a range of applications.

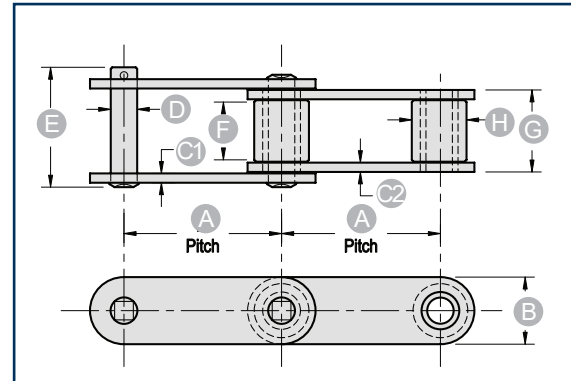


Part Number	A	Ultimate Strength (pounds)	B	C1	C2	D	E	F	G	H	Links per Foot	AVG Weight per Foot (pounds)
Part Number	AVG Pitch	Ultimate Strength (pounds)	Sidebar Height	Outer Sidebar Thickness	Inner Sidebar Thickness	Rivet Diameter	Overall Width	Max. Sprocket Thickness	Length of Bearing	Bushing Diameter	Links per Foot	AVG Weight per Foot (pounds)
MS188	2.609	25,000	1 1/8	1/4	1/4	1/2	2 11/16	1	1 1/16	7/8	4.6	3.8
MS131	3.075	40,000	1 1/2	3/8	3/8	5/8	3 3/16	1 1/8	2	1 1/4	3.9	8.3
MS102B	4.000	40,000	1 1/2	3/8	3/8	5/8	4 11/32	2	2 7/8	1	3.0	6.9
MS110	6.000	40,000	1 1/2	3/8	3/8	5/8	4 11/32	2	2 7/8	1 1/4	2.0	6.3

All dimensions shown in inches unless noted otherwise.

Steel, Bushed, Roller - Straight Sidebar

- Fully heat-treated superior alloy steel
- Solid bushings and rollers
- Quad staked rivet design

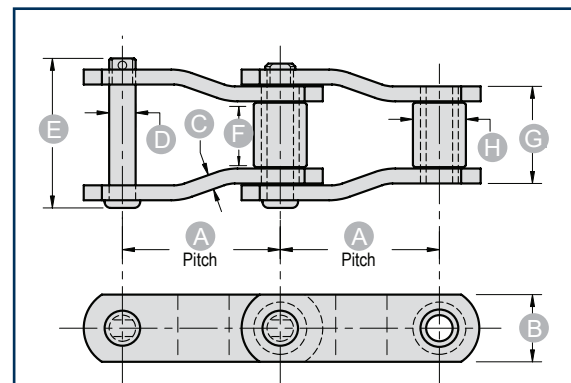


Part Number	A	B	C1	C2	D	E	F	G	H	Links per Foot	AVG Weight per Foot (pounds)	
	AVG Pitch	Ultimate Strength (pounds)	Sidebar Height	Outer Sidebar Thickness	Inner Sidebar Thickness	Rivet Diameter	Overall Width	Max. Sprocket Thickness	Length of Bearing	Roller Diameter		
81X	2.609	24,000	1 1/8	5/32	5/32	7/16	2 1/8	7/8	1 3/8	29/32	4.6	2.6
81X-HD	2.609	42,800	1 1/4	7/32	5/16	7/16	2 9/16	7/8	1 11/16	29/32	4.6	4.0
81X-XHD	2.609	42,800	1 1/4	5/16	5/16	7/16	2 3/4	7/8	1 7/8	29/32	4.6	4.5

All dimensions shown in inches unless noted otherwise.

Steel, Bushed, Roller - Offset Sidebar

- Fully heat-treated superior alloy steel
- Solid bushings and rollers
- Quad staked rivet design



Part Number	A	B	C	D	E	F	G	H	Links per Foot	AVG Weight per Foot (pounds)	
	AVG Pitch	Ultimate Strength (pounds)	Sidebar Height	Sidebar Thickness	Rivet Diameter	Overall Width	Max. Sprocket Thickness	Length of Bearing	Roller Diameter		
LXS882	2.609	29,000	1 1/8	1/4	7/16	2 1/2	7/8	1 21/32	7/8	4.6	3.6

All dimensions shown in inches unless noted otherwise.

BUSHED ENGINEERED CLASS CHAIN ATTACHMENTS



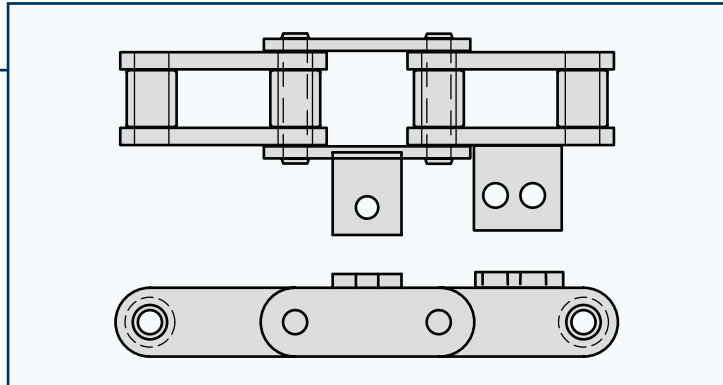
HEADQUARTERS 514.886.5270

12985 Rue Brault, Mirabel Quebec, Canada J7J 0W2

UNIKINGCANADA.COM

A1 + A2 Attachments

- Lug One Side
- A1: One Hole
- A2: Two Holes
- For Chain Numbers: MS188, MS131, MS102B, MS110



K1 + K2 Attachments

- Lugs Both Sides
- K1: One Hole
- K2: Two Holes
- For Chain Numbers: MS188, MS131, MS102B, MS110

