

STEEL HINGED BELTING



HEADQUARTERS 514.886.5270

12985 Rue Brault, Mirabel Quebec, Canada J7J 0W2

UNIKINGCANADA.COM

1.5 inch Complete Systems

CONVEYOR CONSTRUCTION

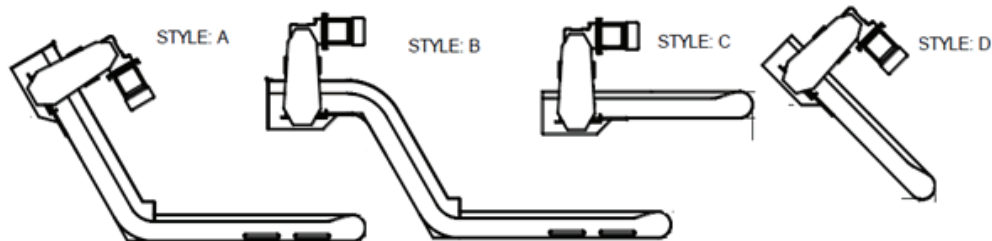
Steel Hinged Conveyor Belting is ideal for handling parts, stampings, die castings, screws, scrap, chips, turnings, material wet or dry, horizontal or elevating, single or multiple unit systems. Hinged Steel Belt are available with complete customization built to meet your requirements.

FEATURES

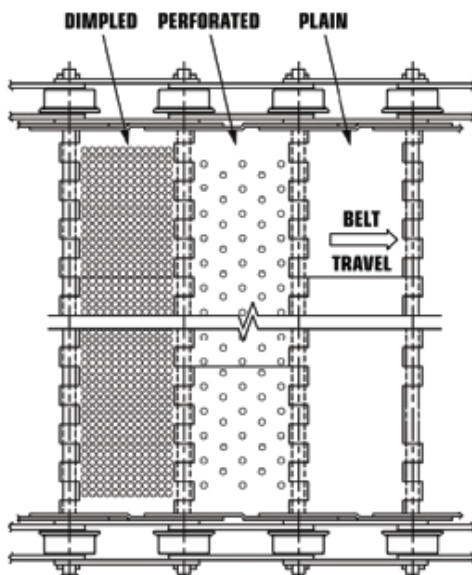
- Heavy Duty Gearmotor • Friction Disk Torque Limiter
- High Carbon Steel Tracks • Regreasable Bearings
- 12 Gauge Formed Frame • Incline Cover w/Chip Suppressor
- Machine Enamel Paint



CONVEYOR CONFIGURATION TYPES



BELT TYPES



VOLTAGE

- 110V (single ph.)
- 220V (3 ph.)
- 440V (3 ph.)
- 575V (3 ph.)

CONTROLS

- Start/Stop - VariableSpeed
- Start/Stop/Reverse - Variable Speed
- Emergency Stop
- Zero Speed Proximity Sensor

2.5 inch Complete Systems

CONVEYOR CONSTRUCTION

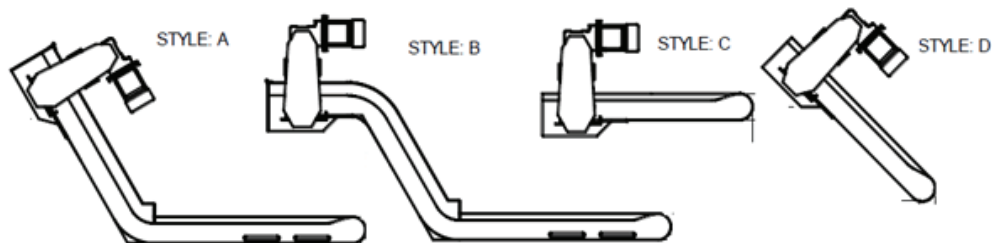
Steel Hinged Conveyor Belting is ideal for handling parts, stampings, die castings, screws, scrap, chips, turnings, material wet or dry, horizontal or elevating, single or multiple unit systems. Hinged Steel Belt are available with complete customization built to meet your requirements.

FEATURES

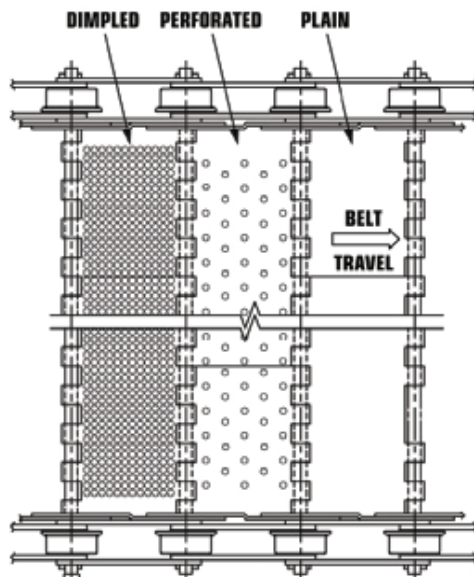
- Heavy Duty Gearmotor • Friction Disk Torque Limiter
- High Carbon Steel Tracks • Regreasable Bearings
- 12 Gauge Formed Frame • Incline Cover w/Chip Suppressor
- Machine Enamel Paint



CONVEYOR CONFIGURATION TYPES



BELT TYPES



VOLTAGE

- 110V (single ph.)
- 220V (3 ph.)
- 440V (3 ph.)
- 575V (3 ph.)

CONTROLS

- Start/Stop - VariableSpeed
- Start/Stop/Reverse - Variable Speed
- Emergency Stop
- Zero Speed Proximity Sensor

1.25 inch Steel Hinged Belt

BELT CONSTRUCTION

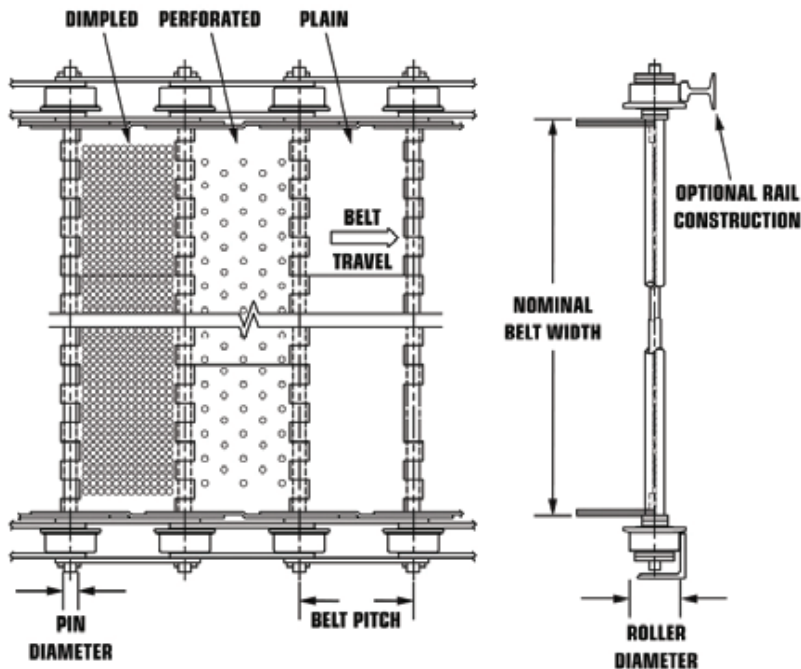
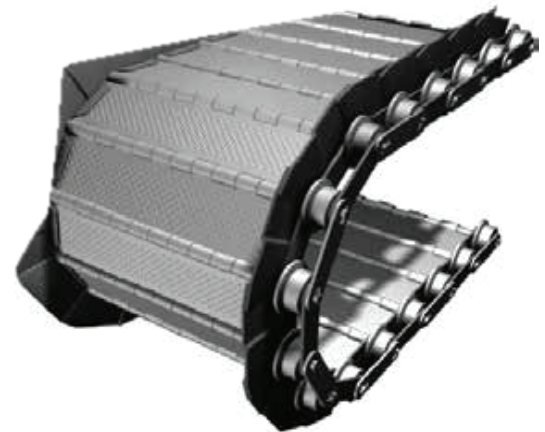
Steel Hinged Conveyor Belting is ideal for handling parts, stampings, die castings, screws, scrap, chips, turnings, material wet or dry, horizontal or elevating, single or multiple unit systems. This category of belting is reliable when moving materials under demanding conditions such as heat, impact and abrasion.

BELT WIDTH

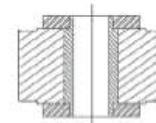
4" to 72"
(Larger custom widths can be made)

STANDARD BELT THICKNESS

14 gauge



ROLLER OPTIONS



Plain

MODIFICATIONS AVAILABLE

- Welded Barrels
- Welded side wings
- Hardened axels
- Additional reinforcement options

OPTIONAL BELT REINFORCEMENTS



Channel (RC)
with impact shoe



A-Pan (RA)
with impact shoe

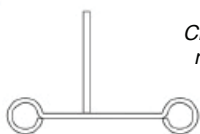


Top Plate (RP)



Impact Shoe

AVAILABLE BELT CLEAT STYLES



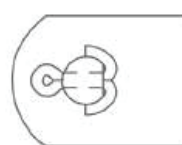
Bar Cleat

*Cleats can be plain,
notched or coped*

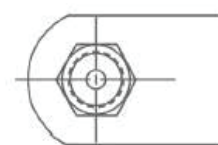


Angle Cleat

OPTIONAL BELT PIN STYLES



Pin Style #3 Coltered



Pin Style #5 Hug Locknut
Multiple grease fittings options available

1.5 inch Steel Hinged Belt

BELT CONSTRUCTION

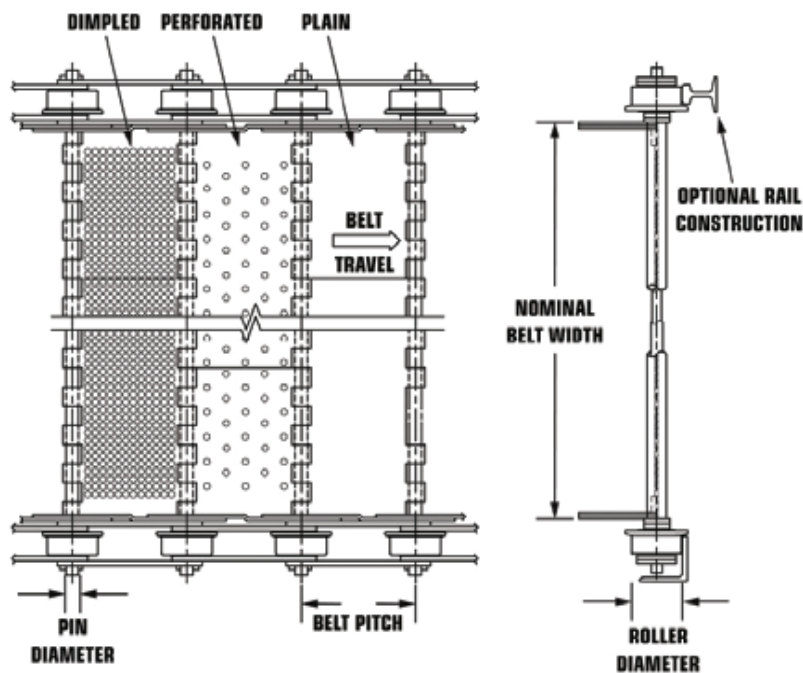
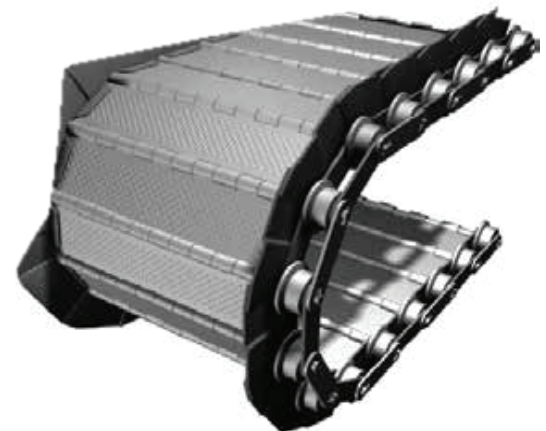
Steel Hinged Conveyor Belting is ideal for handling parts, stampings, die castings, screws, scrap, chips, turnings, material wet or dry, horizontal or elevating, single or multiple unit systems. This category of belting is reliable when moving materials under demanding conditions such as heat, impact and abrasion.

BELT WIDTH

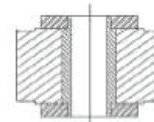
4" to 72"
(Larger custom widths can be made)

STANDARD BELT THICKNESS

14 gauge



ROLLER OPTIONS



Plain

MODIFICATIONS AVAILABLE

- Welded Barrels
- Welded side wings
- Hardened axels
- Additional reinforcement options

OPTIONAL BELT REINFORCEMENTS



Channel (RC)
with impact shoe



A-Pan (RA)
with impact shoe

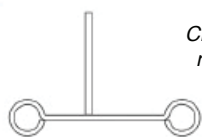


Top Plate (RP)



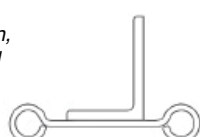
Impact Shoe

AVAILABLE BELT CLEAT STYLES



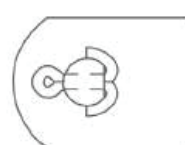
Bar Cleat

*Cleats can be plain,
notched or coped*



Angle Cleat

OPTIONAL BELT PIN STYLES



Pin Style #3 Coltered

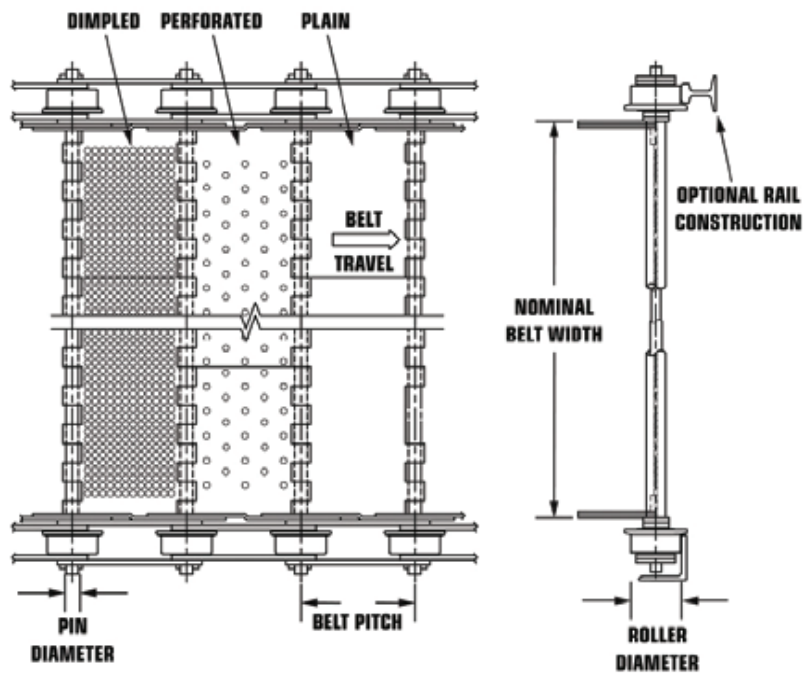
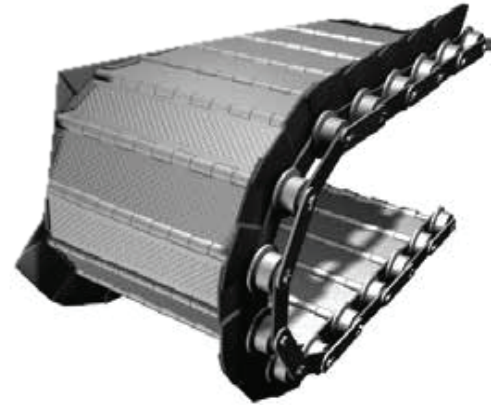


Pin Style #5 Hug Locknut
Multiple grease fittings options available

2.5 inch Steel Hinged Belt

BELT CONSTRUCTION

Steel Hinged Conveyor Belting is ideal for handling parts, stampings, die castings, screws, scrap, chips, turnings, material wet or dry, horizontal or elevating, single or multiple unit systems. This category of belting is reliable when moving materials under demanding conditions such as heat, impact and abrasion. Highlights include: precision die formed hinge pan, welded side wings, rugged chain construction, up to 25,000 lb. belt pull, sintered steel rollers, and widths up to 120". Some of the modifications we offer include Pimpled Pans, Perforated Pans, Bar Cleats, Angle Cleats, Flanged Rollers, Needle Bearings and Threaded Pins.



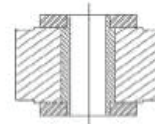
BELT WIDTH

4" to 120" (Larger custom widths can be made)

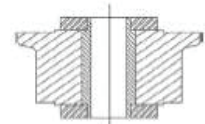
STANDARD BELT THICKNESS

1/8"

ROLLER OPTIONS



Plain



Flanged

MODIFICATIONS AVAILABLE

- Welded Barrels
- Welded side wings
- Hardened axels
- Additional reinforcement options

OPTIONAL BELT REINFORCEMENTS



Channel (RC)
with impact shoe



A-Pan (RA)
with impact shoe

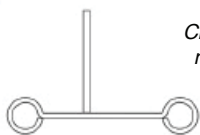


Top Plate (RP)



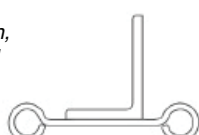
Impact Shoe

AVAILABLE BELT CLEAT STYLES



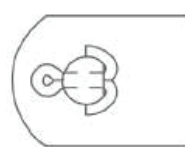
Bar Cleat

*Cleats can be plain,
notched or coped*

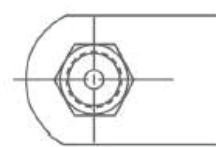


Angle Cleat

OPTIONAL BELT PIN STYLES



Pin Style #3 Coltered

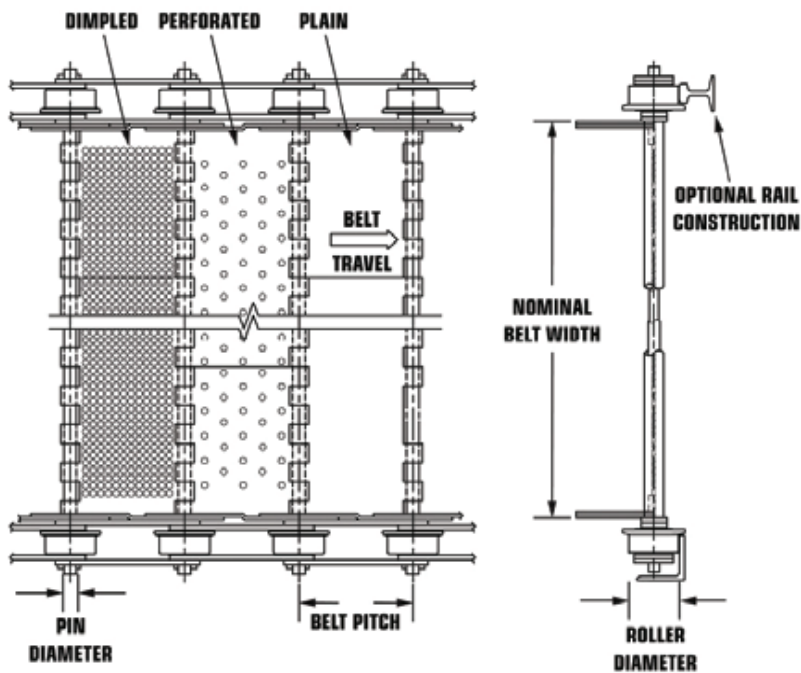
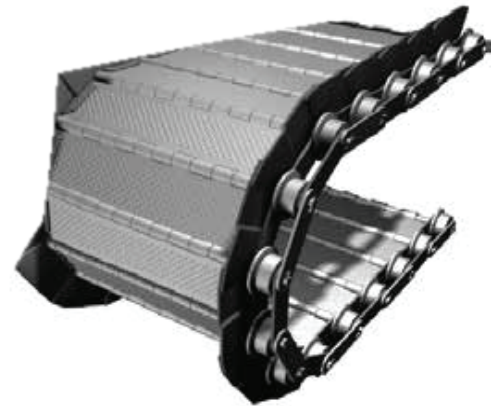


Pin Style #5 Hug Locknut
Multiple grease fittings options available

4 inch Steel Hinged Belt

BELT CONSTRUCTION

Steel Hinged Conveyor Belting is ideal for handling parts, stampings, die castings, screws, scrap, chips, turnings, material wet or dry, horizontal or elevating, single or multiple unit systems. This category of belting is reliable when moving materials under demanding conditions such as heat, impact and abrasion. Highlights include: precision die formed hinge pan, welded side wings, rugged chain construction, up to 25,000 lb. belt pull, sintered steel rollers, and widths up to 120". Some of the modifications we offer include Pimpled Pans, Perforated Pans, Bar Cleats, Angle Cleats, Flanged Rollers, Needle Bearings and Threaded Pins.



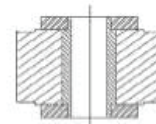
BELT WIDTH

6" to 120" (Larger custom widths can be made)

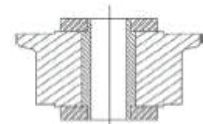
STANDARD BELT THICKNESS

1/8"

ROLLER OPTIONS



Plain



Flanged

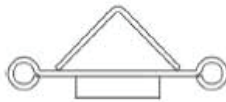
MODIFICATIONS AVAILABLE

- Welded Barrels
- Welded side wings
- Hardened axels
- Additional reinforcement options

OPTIONAL BELT REINFORCEMENTS



Channel (RC)
with impact shoe



A-Pan (RA)
with impact shoe

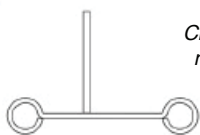


Top Plate (RP)



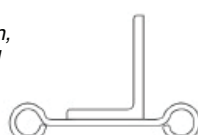
Impact Shoe

AVAILABLE BELT CLEAT STYLES



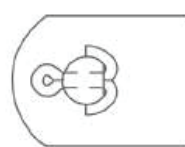
Bar Cleat

*Cleats can be plain,
notched or coped*

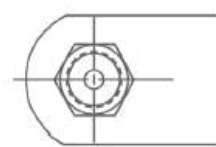


Angle Cleat

OPTIONAL BELT PIN STYLES



Pin Style #3 Coltered

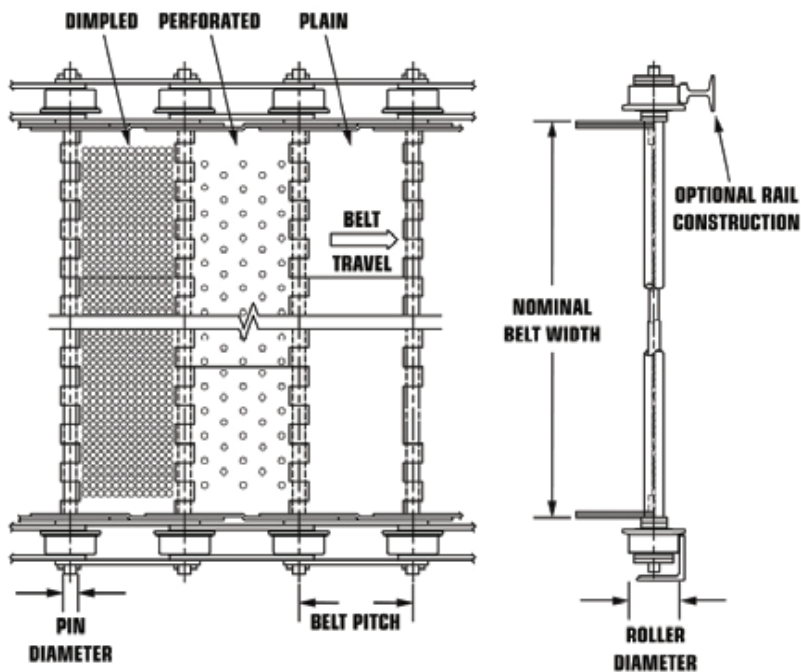
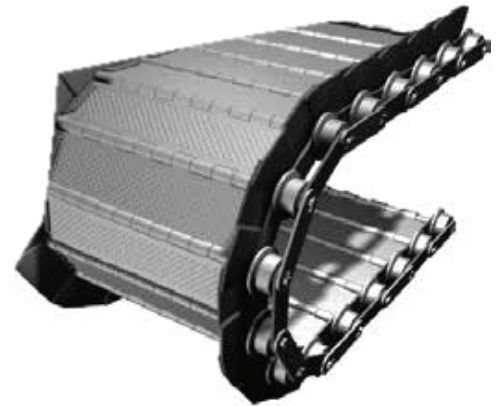


Pin Style #5 Hug Locknut
Multiple grease fittings options available

6 inch Steel Belt

BELT CONSTRUCTION

The 6" Hinge Belt is ideal for handling parts in the following industries: Waste and Recycling, Stamping, Manufacturing, OEM, Foundry and Mining, Automotive. Our highlights include: precision die formed hinge pan, welded side wings, rugged chain construction, up to 25,000 lb. belt pull, sintered steel rollers, and widths up to 120". Some of the modifications we offer include Pimpled Pans, Perforated Pans, Bar Cleats, Angle Cleats, Flanged Rollers, Needle Bearings and Threaded Pins.



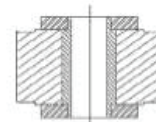
BELT WIDTH

6" to 120" (Larger custom widths can be made)

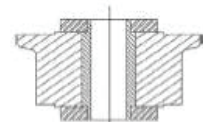
STANDARD BELT THICKNESS

1/4" or 3/16"

ROLLER OPTIONS



Plain



Flanged

MODIFICATIONS AVAILABLE

- Welded Barrels
- Welded side wings
- Hardened axels
- Additional reinforcement options

OPTIONAL BELT REINFORCEMENTS



Channel (RC) with impact shoe



A-Pan (RA) with impact shoe

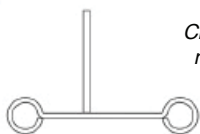


Top Plate (RP)



Impact Shoe

AVAILABLE BELT CLEAT STYLES



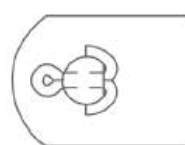
Bar Cleat

Cleats can be plain, notched or coped



Angle Cleat

OPTIONAL BELT PIN STYLES



Pin Style #3 Coltered



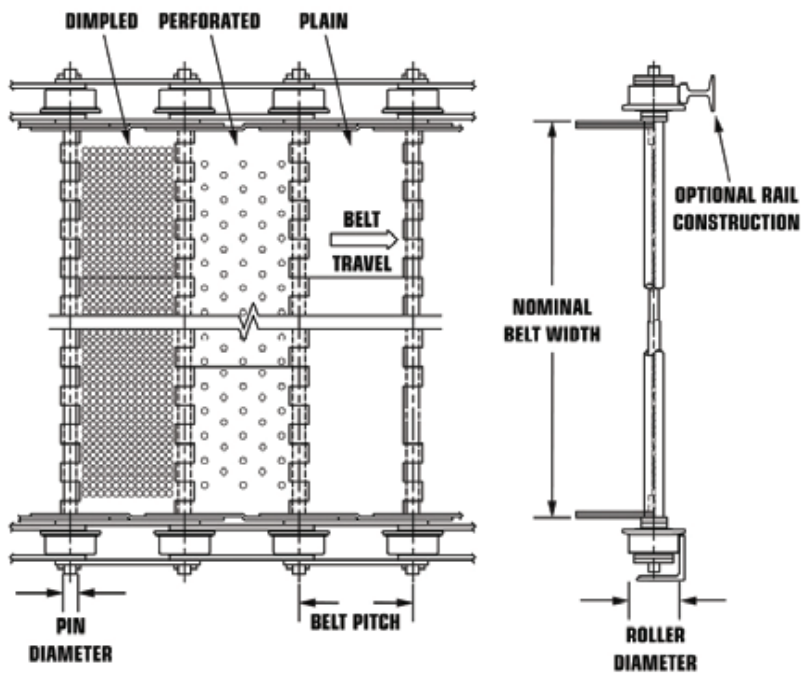
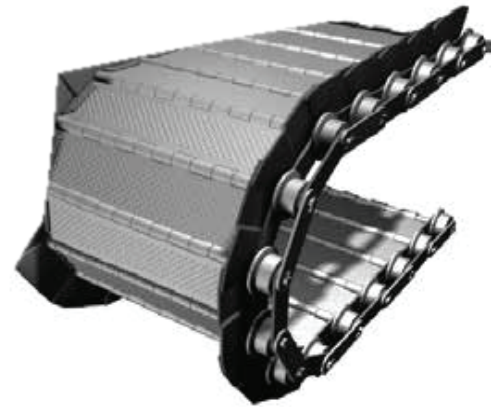
Pin Style #5 Hug Locknut
Multiple grease fittings options available



9 inch Steel Hinged Belt

BELT CONSTRUCTION

The 9" Hinge Belt is ideal for handling parts in the following industries: Waste and Recycling, Stamping, Manufacturing, OEM, Foundry and Mining, Automotive. Our highlights include: precision die formed hinge pan, welded side wings, rugged chain construction, up to 25,000 lb. belt pull, sintered steel rollers, and widths up to 120". Some of the modifications we offer include Pimpled Pans, Perforated Pans, Bar Cleats, Angle Cleats, Flanged Rollers, Needle Bearings and Threaded Pins.



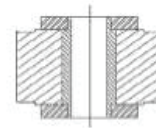
BELT WIDTH

6" to 120" (Larger custom widths can be made)

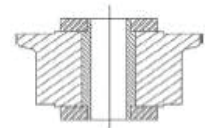
STANDARD BELT THICKNESS

1/4" or 3/16"

ROLLER OPTIONS



Plain



Flanged

MODIFICATIONS AVAILABLE

- Welded Barrels
- Welded side wings
- Hardened axels
- Additional reinforcement options

OPTIONAL BELT REINFORCEMENTS



Channel (RC)
with impact shoe



A-Pan (RA)
with impact shoe

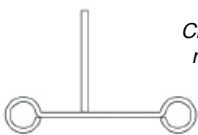


Top Plate (RP)



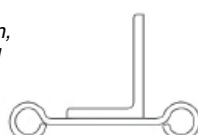
Impact Shoe

AVAILABLE BELT CLEAT STYLES



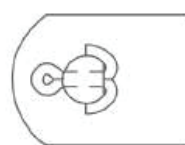
Bar Cleat

*Cleats can be plain,
notched or coped*

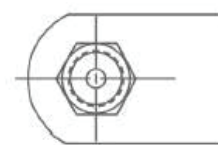


Angle Cleat

OPTIONAL BELT PIN STYLES



Pin Style #3 Coltered

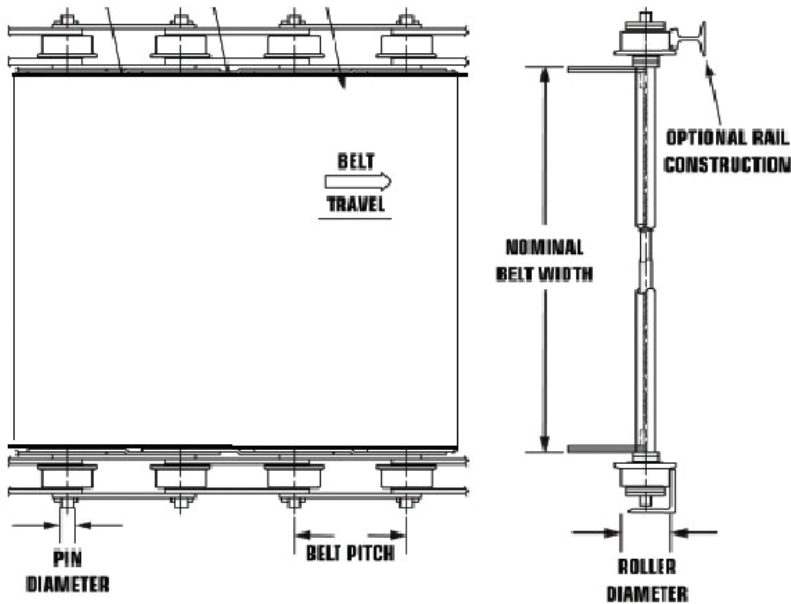
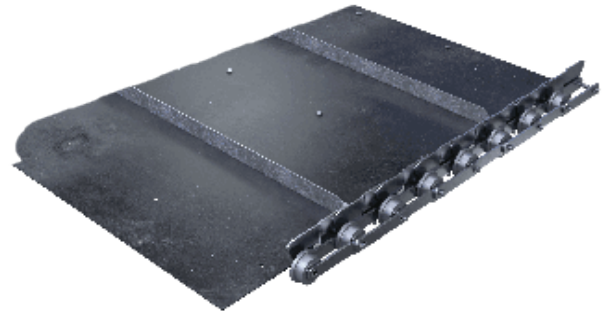


Pin Style #5 Hug Locknut
Multiple grease fittings options available

4 inch Combi-Belt

BELT CONSTRUCTION

The inter-locking side wind chain construction of the Combi-Belt Rubber / PVC & Chain Conveyor Belting is unique in the conveyor belting industry. We offer top cover in Rubber and PVC for a wide range of end-uses. Combi-Belts will fit in the same frame as Steel Hinge Conveyor Belts with little or no modifications needed. Some modifications are available including Angle Cleats and Impact Plates.



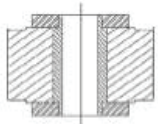
BELT WIDTH

6" up to 120" (Larger custom widths can be made)

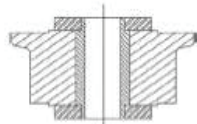
STANDARD BELT MATERIAL

PVC - Rubber

ROLLER OPTIONS



Plain



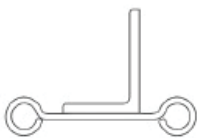
Flanged

OPTIONAL BELT REINFORCEMENTS



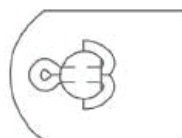
Channel (RC) with impact shoe

AVAILABLE BELT CLEAT STYLES



Angle Cleat

OPTIONAL BELT PIN STYLES



Pin Style #3 Coltered

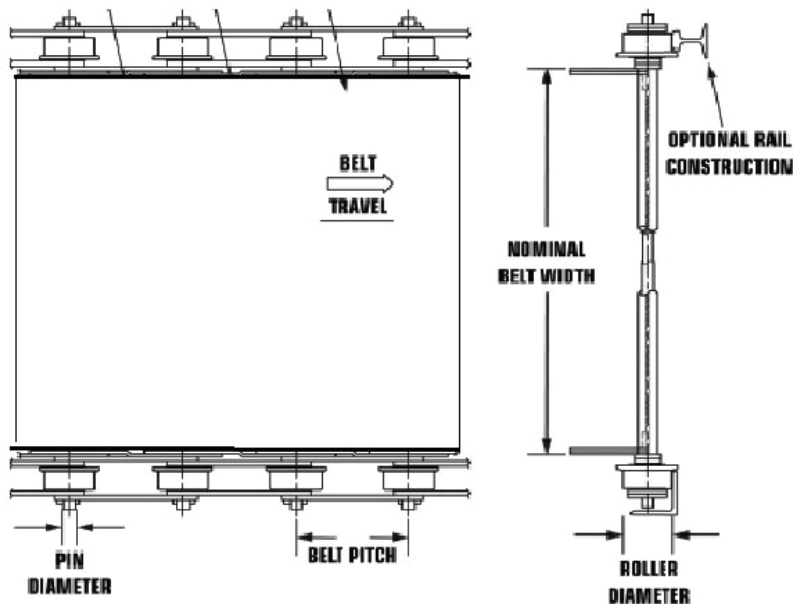
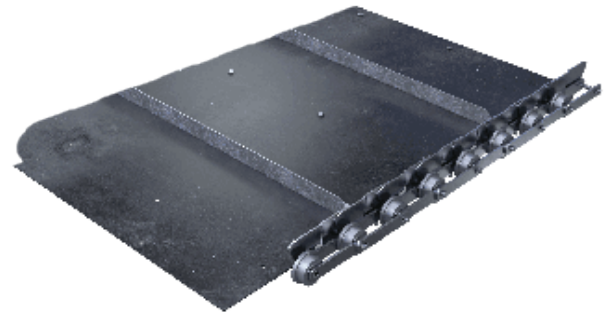


Pin Style #5 Hug Locknut
Multiple grease fittings options available

6 inch Combi-Belt

BELT CONSTRUCTION

The inter-locking side wind chain construction of the Combi-Belt Rubber / PVC & Chain Conveyor Belting is unique in the conveyor belting industry. We offer top cover in Rubber and PVC for a wide range of end-uses. Combi-Belts will fit in the same frame as Steel Hinge Conveyor Belts with little or no modifications needed. Some modifications are available including Angle Cleats and Impact Plates.



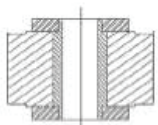
BELT WIDTH

6" up to 120" (Larger custom widths can be made)

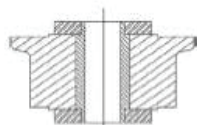
STANDARD BELT MATERIAL

PVC - Rubber

ROLLER OPTIONS



Plain



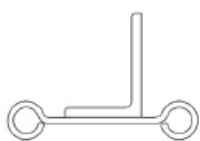
Flanged

OPTIONAL BELT REINFORCEMENTS



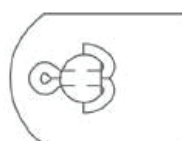
Channel (RC) with impact shoe

AVAILABLE BELT CLEAT STYLES



Angle Cleat

OPTIONAL BELT PIN STYLES



Pin Style #3 Coltered



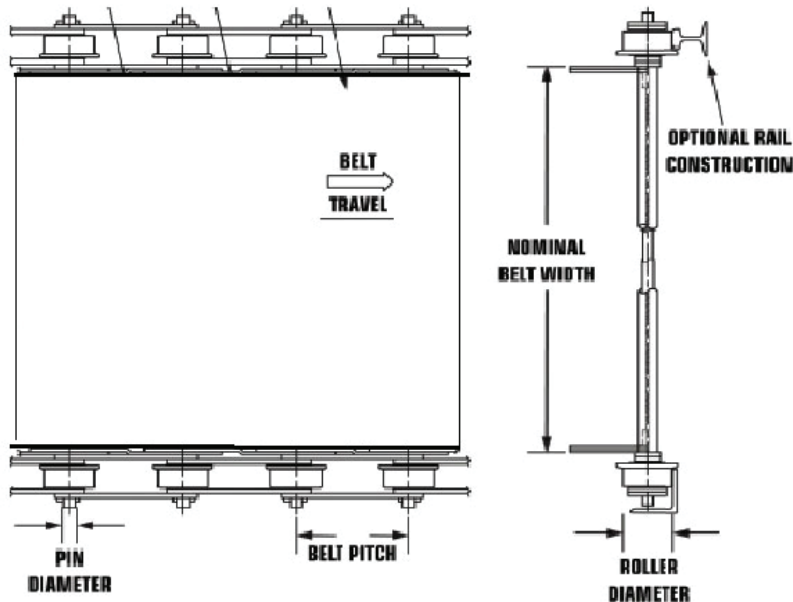
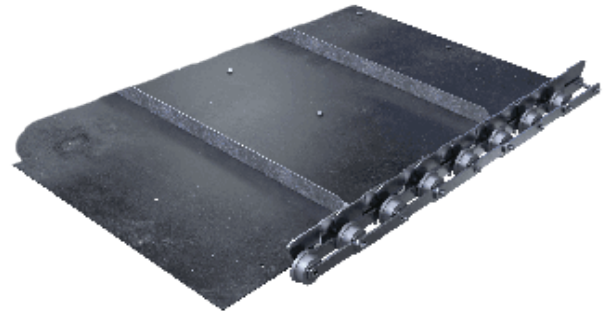
Pin Style #5 Hug Locknut
Multiple grease fittings options available



9 inch Combi-Belt

BELT CONSTRUCTION

The inter-locking side wind chain construction of the Combi-Belt Rubber / PVC & Chain Conveyor Belting is unique in the conveyor belting industry. We offer top cover in Rubber and PVC for a wide range of end-uses. Combi-Belts will fit in the same frame as Steel Hinge Conveyor Belts with little or no modifications needed. Some modifications are available including Angle Cleats and Impact Plates.



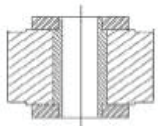
BELT WIDTH

6" up to 120" (Larger custom widths can be made)

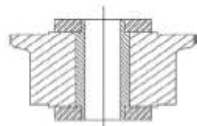
STANDARD BELT MATERIAL

PVC - Rubber

ROLLER OPTIONS



Plain



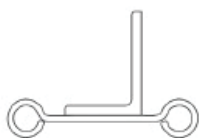
Flanged

OPTIONAL BELT REINFORCEMENTS



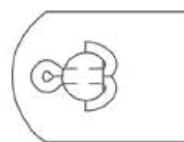
Channel (RC) with impact shoe

AVAILABLE BELT CLEAT STYLES

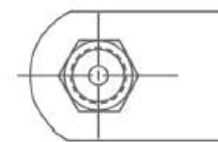


Angle Cleat

OPTIONAL BELT PIN STYLES



Pin Style #3 Coltered



Pin Style #5 Hug Locknut
Multiple grease fittings options available

6 inch Beaded Apron Belt

BELT CONSTRUCTION

Made of overlapping steel pans mounted on SBR chains, apron pan conveyor belts feature cleaner discharge and more durable service. The Beaded Apron Pan Conveyor Belts are engineered to absorb the impact of large lumps, repeated loading, and inclined conveying with minimum spillage. Apron Pan Conveyors are good for heavy-duty applications, including a wide variety of materials, from hot and abrasive to fine and dry. These belts are mostly see this conveyor belt used in Foundry's and Mining.



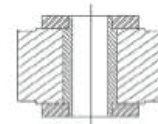
BELT WIDTH

6" to 120"
(Larger custom widths can be made)

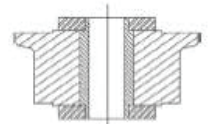
STANDARD BELT THICKNESS

Wide Variety

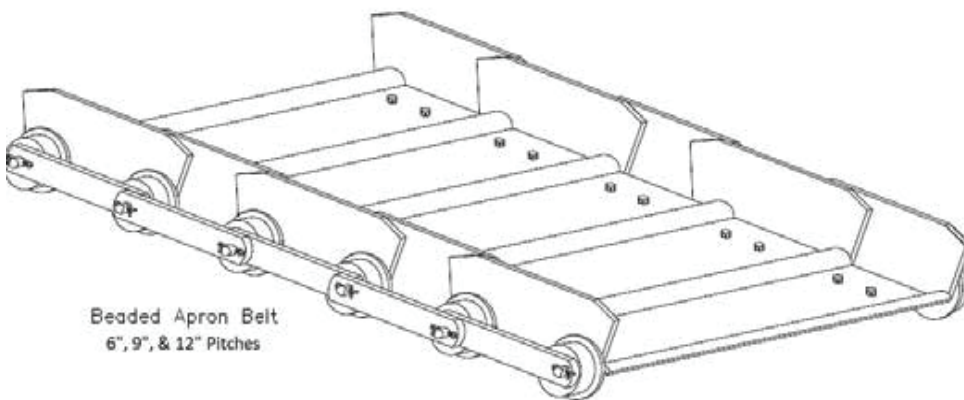
ROLLER OPTIONS



Plain



Flanged



MODIFICATIONS AVAILABLE

- Welded Barrels
- Welded side wings
- Hardened axels
- Additional reinforcement options

OPTIONAL BELT REINFORCEMENTS



Channel (RC)
with impact shoe



A-Pan (RA)
with impact shoe

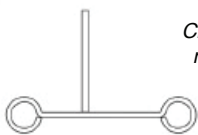


Top Plate (RP)



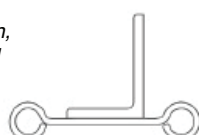
Impact Shoe

AVAILABLE BELT CLEAT STYLES



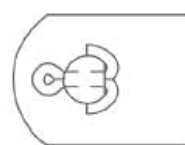
Bar Cleat

*Cleats can be plain,
notched or coped*

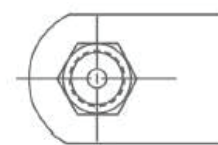


Angle Cleat

OPTIONAL BELT PIN STYLES



Pin Style #3 Coltered



Pin Style #5 Hug Locknut
Multiple grease fittings options available

9 inch Beaded Apron Belt

BELT CONSTRUCTION

Made of overlapping steel pans mounted on SBR chains, apron pan conveyor belts feature cleaner discharge and more durable service. The Beaded Apron Pan Conveyor Belts are engineered to absorb the impact of large lumps, repeated loading, and inclined conveying with minimum spillage. Apron Pan Conveyors are good for heavy-duty applications, including a wide variety of materials, from hot and abrasive to fine and dry. These belts are mostly see this conveyor belt used in Foundry's and Mining.



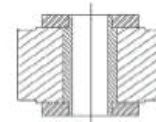
BELT WIDTH

6" to 120"
(Larger custom widths can be made)

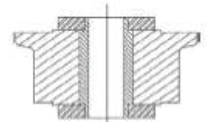
STANDARD BELT THICKNESS

Wide Variety

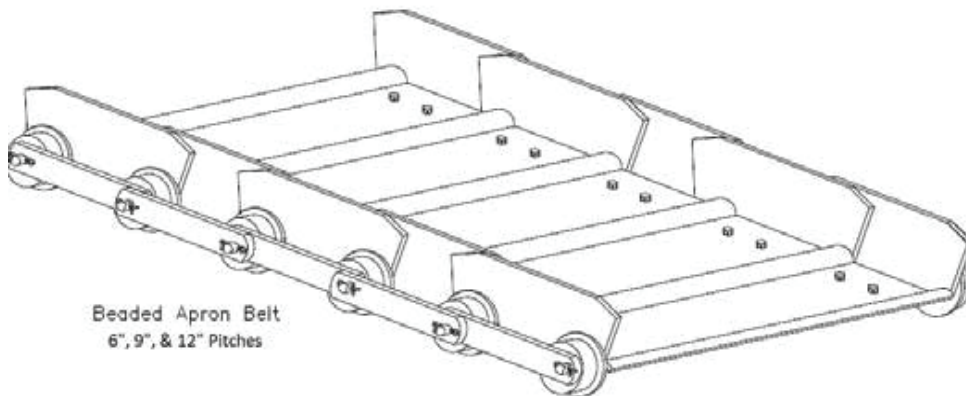
ROLLER OPTIONS



Plain



Flanged



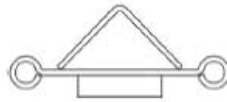
MODIFICATIONS AVAILABLE

- Welded Barrels
- Welded side wings
- Hardened axels
- Additional reinforcement options

OPTIONAL BELT REINFORCEMENTS



Channel (RC)
with impact shoe



A-Pan (RA)
with impact shoe

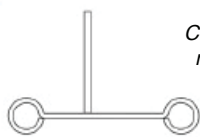


Top Plate (RP)



Impact Shoe

AVAILABLE BELT CLEAT STYLES



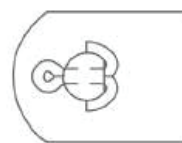
Bar Cleat

*Cleats can be plain,
notched or coped*

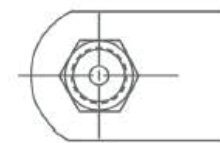


Angle Cleat

OPTIONAL BELT PIN STYLES



Pin Style #3 Coltered



Pin Style #5 Hug Locknut
Multiple grease fittings options available

12 inch Beaded Apron Belt

BELT CONSTRUCTION

Made of overlapping steel pans mounted on SBR chains, apron pan conveyor belts feature cleaner discharge and more durable service. The Beaded Apron Pan Conveyor Belts are engineered to absorb the impact of large lumps, repeated loading, and inclined conveying with minimum spillage. Apron Pan Conveyors are good for heavy-duty applications, including a wide variety of materials, from hot and abrasive to fine and dry. These belts are mostly see this conveyor belt used in Foundry's and Mining.



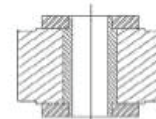
BELT WIDTH

6" to 120"
(Larger custom widths can be made)

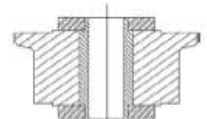
STANDARD BELT THICKNESS

Wide Variety

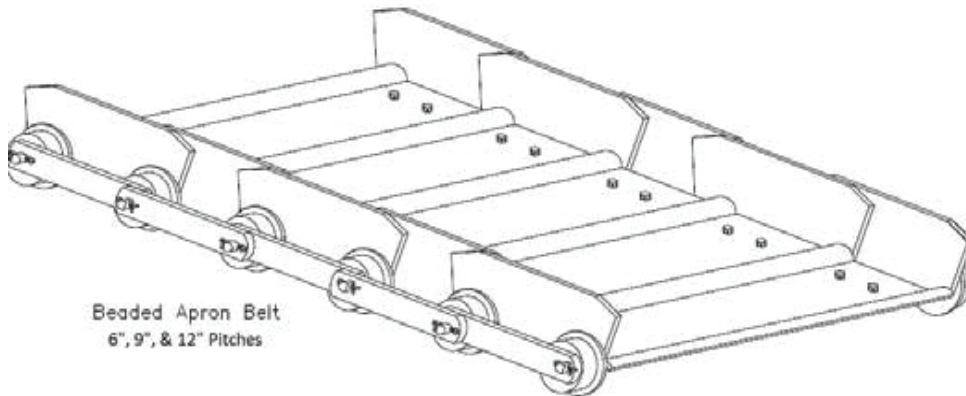
ROLLER OPTIONS



Plain



Flanged



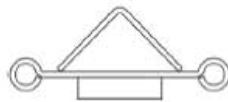
MODIFICATIONS AVAILABLE

- Welded Barrels
- Welded side wings
- Hardened axels
- Additional reinforcement options

OPTIONAL BELT REINFORCEMENTS



Channel (RC)
with impact shoe



A-Pan (RA)
with impact shoe

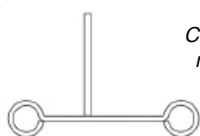


Top Plate (RP)



Impact Shoe

AVAILABLE BELT CLEAT STYLES



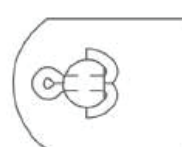
Bar Cleat

*Cleats can be plain,
notched or coped*



Angle Cleat

OPTIONAL BELT PIN STYLES



Pin Style #3 Coltered

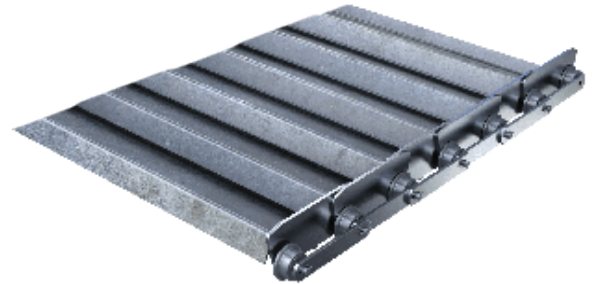


Pin Style #5 Hug Locknut
Multiple grease fittings options available

6 inch Z Pan Belt

BELT CONSTRUCTION

The 6" Z Pan Belt is ideal for handling parts in the following industries: Waste and Recycling, Stamping, Manufacturing, OEM, Foundry and Mining. Our highlights include: precision die formed hinge pan, welded side wings, rugged chain construction, up to 25,000 lb. belt pull, sintered steel rollers, and widths up to 120".



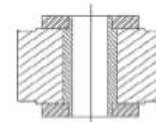
BELT WIDTH

6" to 120"
(Larger custom widths can be made)

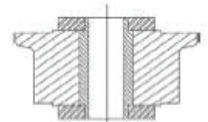
STANDARD BELT THICKNESS

Wide Variety

ROLLER OPTIONS



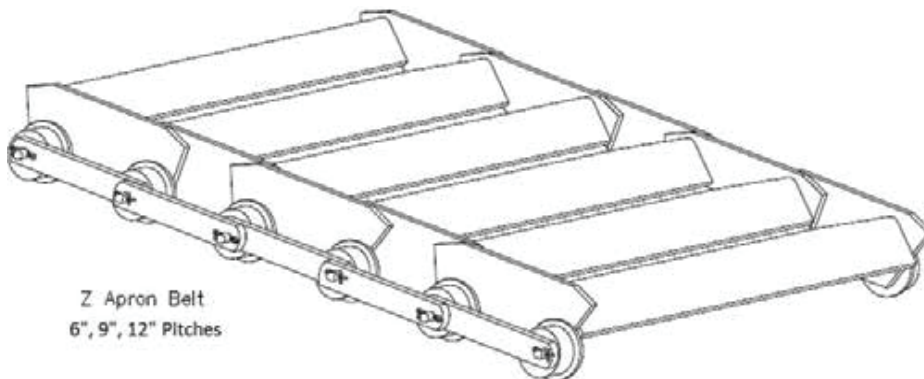
Plain



Flanged

MODIFICATIONS AVAILABLE

- Welded Barrels
- Welded side wings
- Hardened axels
- Additional reinforcement options

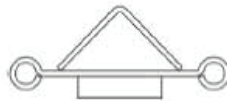


Z Apron Belt
6", 9", 12" Pitches

OPTIONAL BELT REINFORCEMENTS



Channel (RC)
with impact shoe



A-Pan (RA)
with impact shoe

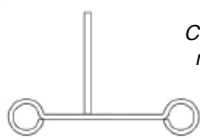


Top Plate (RP)



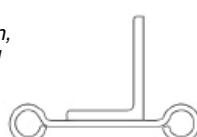
Impact Shoe

AVAILABLE BELT CLEAT STYLES



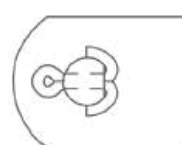
Bar Cleat

*Cleats can be plain,
notched or coped*

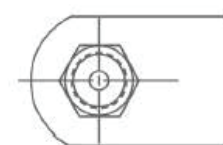


Angle Cleat

OPTIONAL BELT PIN STYLES



Pin Style #3 Coltered

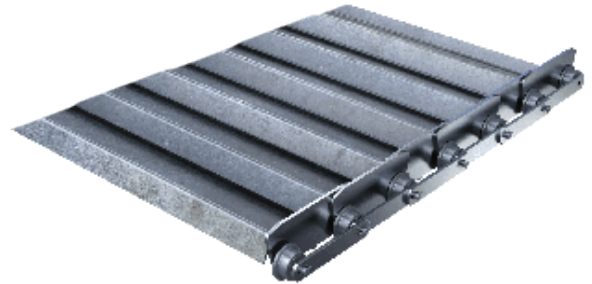


Pin Style #5 Hug Locknut
Multiple grease fittings options available

9 inch Z Pan Belt

BELT CONSTRUCTION

The 9" Z Pan Belt is ideal for handling parts in the following industries: Waste and Recycling, Stamping, Manufacturing, OEM, Foundry and Mining. Our highlights include: precision die formed hinge pan, welded side wings, rugged chain construction, up to 25,000 lb. belt pull, sintered steel rollers, and widths up to 120".



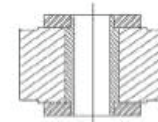
BELT WIDTH

6" to 120"
(Larger custom widths can be made)

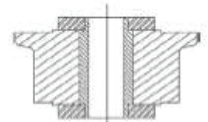
STANDARD BELT THICKNESS

Wide Variety

ROLLER OPTIONS



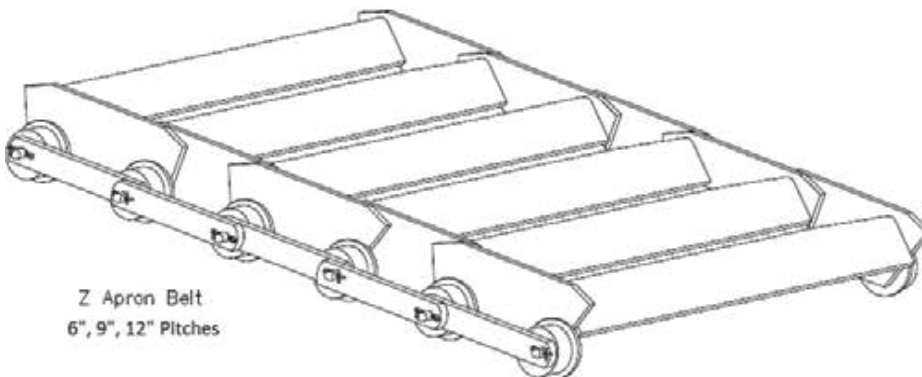
Plain



Flanged

MODIFICATIONS AVAILABLE

- Welded Barrels
- Welded side wings
- Hardened axels
- Additional reinforcement options



OPTIONAL BELT REINFORCEMENTS



Channel (RC)
with impact shoe



A-Pan (RA)
with impact shoe

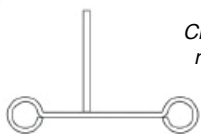


Top Plate (RP)



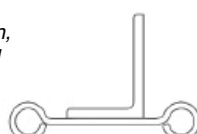
Impact Shoe

AVAILABLE BELT CLEAT STYLES



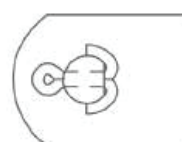
Bar Cleat

*Cleats can be plain,
notched or coped*



Angle Cleat

OPTIONAL BELT PIN STYLES



Pin Style #3 Coltered

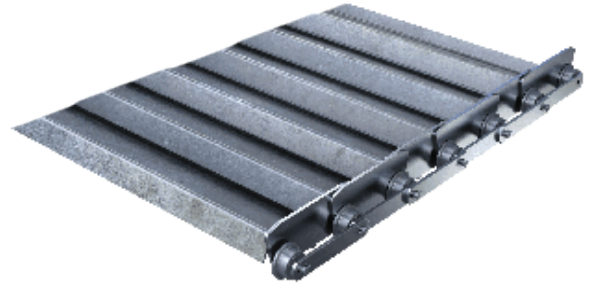


Pin Style #5 Hug Locknut
Multiple grease fittings options available

12 inch Z Pan Belt

BELT CONSTRUCTION

The 12" Z Pan Belt is ideal for handling parts in the following industries: Waste and Recycling, Stamping, Manufacturing, OEM, Foundry and Mining. Our highlights include: precision die formed hinge pan, welded side wings, rugged chain construction, up to 25,000 lb. belt pull, sintered steel rollers, and widths up to 120".



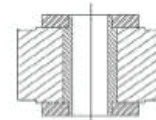
BELT WIDTH

6" to 120"
(Larger custom widths can be made)

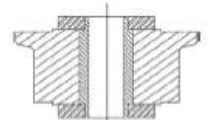
STANDARD BELT THICKNESS

Wide Variety

ROLLER OPTIONS



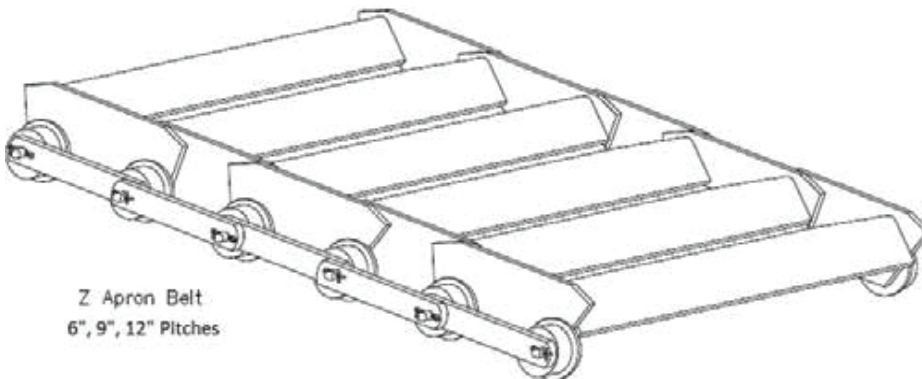
Plain



Flanged

MODIFICATIONS AVAILABLE

- Welded Barrels
- Welded side wings
- Hardened axels
- Additional reinforcement options



Z Apron Belt
6", 9", 12" Pitches

OPTIONAL BELT REINFORCEMENTS



Channel (RC)
with impact shoe



A-Pan (RA)
with impact shoe

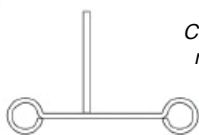


Top Plate (RP)



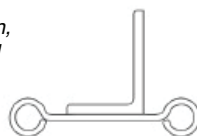
Impact Shoe

AVAILABLE BELT CLEAT STYLES



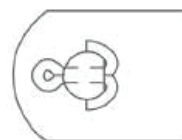
Bar Cleat

*Cleats can be plain,
notched or coped*

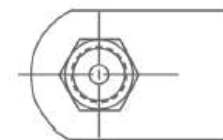


Angle Cleat

OPTIONAL BELT PIN STYLES



Pin Style #3 Coltered



Pin Style #5 Hug Locknut
Multiple grease fittings options available