

# WELDED STEEL CHAIN



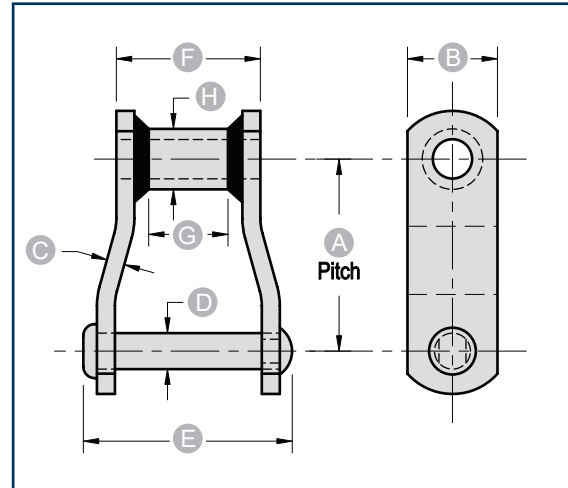
HEADQUARTERS 514.886.5270

12985 Rue Brault, Mirabel Quebec, Canada J7J 0W2

[UNIKINGCANADA.COM](http://UNIKINGCANADA.COM)

Welded Steel Mill Chains (Offset Sidebars) are recommended for most conveying and elevating applications in which a high strength steel rollerless chain is required. A complete line on attachments and optional heat treatment make them easily adaptable to a wide variety of applications.

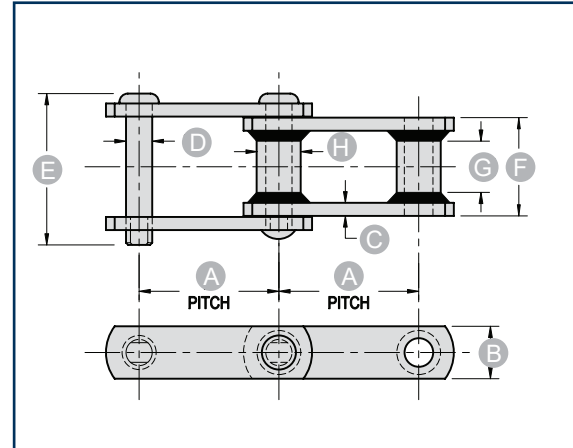
- All pins are through-hardened
- 1" & larger pins are further induction hardened
- Pre-Greased Rivets available upon request on all sizes



Part Number	A	Average Ultimate Strength (pounds)	WH <sup>+</sup> Average Ultimate Strength (pounds)	B	C	D	E	F	G	H	Links per Foot	AVG Weight per Foot (pounds)
	AVG Pitch			Sidebar Height	Sidebar Thickness	Rivet Diameter	Overall Width	Length of Bearing	Max. Sprocket Thickness	Barrel O.D.		
WS78**	2.609	29,800	34,000	1 ¼	¼	½	2 ⅞	1 ⅝	¾	0.84	4.6	3.9
WR78	2.609	29,800	34,000	1 ¼	¼	½	3	2	1	0.84	4.6	4.1
WR78XHD	2.640	32,700	38,500	1 ¼	⅜	⅝	3 ⅝	2	1	1.05	4.5	6.3
WR78-4	4.000	29,800	34,000	1 ¼	¼	½	3	2	1	0.84	3	3.4
WR82	3.075	32,780	39,000	1 ¼	¼	⅝	3 ⅝	2 ¼	1 ⅝	1.05	3.9	4.7
WR82XHD	3.075	50,400	60,000	1 ½	⅜	¾	3 ⅞	2 ⅝	1 ⅝	1.25	3.9	8.4
WR124	4.000	50,400	60,000	1 ½	⅜	¾	4 ¼	2 ⅞	1 ½	1.25	3	8
WR124XHD	4.050	85,500	121,500	2	½	1	4 ⅞	3	1 ½	1.66	3	14.5
WR111	4.760	50,400	60,000	1 ¼	⅜	¾	4 ⅞	3 ⅝	2 ¼	1.25	2.5	8.6
WR106	6.000	50,400	60,000	1 ½	⅜	¾	4 ¼	2 ⅞	1 ½	1.25	2	6.5
WR106XHD	6.050	85,500	121,500	2	½	1	4 ⅞	3	1 ½	1.66	2	11.5
WR132	6.050	85,500	121,500	2	½	1	6 ¼	4 ⅞	3 ⅝	1.66	2	13.5
WR132XHD	6.050	118,500	142,000	2	⅝	1	6 ¾	4 ⅞	3 ⅝	1.66	2	15.9
WR150	6.050	120,000	144,000	2 ½	½	1	6 ¼	4 ⅞	2 ¾	1.66	2	15.5

“C-type” straight sidebar chain has the same general characteristics as offset sidebar construction. It is recommended for reversible conveyors and allows for the easiest in-field attachment welding.

- All pins are through-hardened
- 1" & larger pins are further induction hardened
- Pre-Greased Rivets available upon request on all sizes



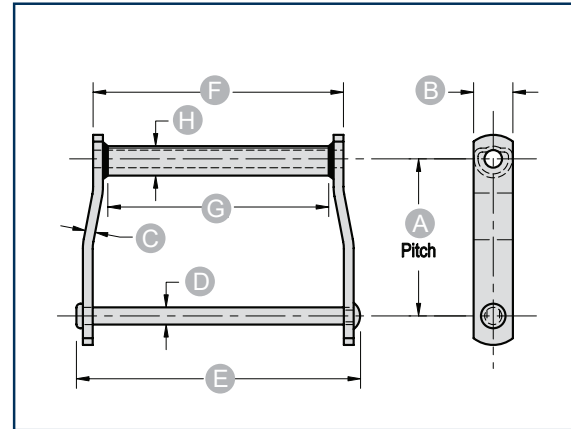
Part Number	A	Average Ultimate Strength (pounds)	WHC* Average Ultimate Strength (pounds)	B	C	D	E	F	G	H	Links per Foot	AVG Weight per Foot (pounds)
WRC131	3.075	50,400	57,000	1 ½	⅜	¾	3 ⅞	2 ⅛	1 ⅞	1.25	3.9	8.4
WRC124	4.000	50,400	57,000	1 ½	⅜	¾	4 ¼	2 ⅜	1 ½	1.25	3	8
WRC124XHD	4.050	85,500	122,700	2	½	1	4 ⅞	3	1 ½	1.66	3	14.5
WRC111	4.760	50,400	57,000	1 ¾	⅜	¾	4 ⅜	3 ⅜	2	1.25	2.5	8.6
WRC110	6.000	50,400	57,000	1 ½	⅜	¾	4 ¼	2 ⅜	1 ½	1.25	2	6.4
WRC110XHD	6.050	85,500	122,000	2	½	1	4 ⅞	3	1 ½	1.66	2	11.5
WRC132	6.050	85,500	122,000	2	½	1	6 ¼	4 ⅞	3 ⅞	1.66	2	13
WRC132XHD	6.050	118,500	142,000	2	⅝	1	6 ¾	4 ⅞	3 ⅞	1.66	2	15.9
WRC150	6.050	120,000	144,000	2 ½	½	1	6 ¼	4 ⅞	3 ⅞	1.66	2	15.5
WRC150XHD	6.050	122,500	148,000	2 ½	⅝	1	6 ¾	4 ⅞	3 ⅞	1.66	2	18

All dimensions shown in inches unless noted otherwise

\*WHC denotes Heat-Treated

Using select grade alloy steels these heavy duty chains are manufactured in North America to high standards. Our unique barrel forming process ensures consistent quality, reducing potential rivet wear and providing high strength and long service life. All heat treating and attachment options are available, as well as reverse barrel design.

- Standard zone induction-hardened rivets for 3/4" and 7/8" diameters
- Standard through-hardened rivets for 1" diameters



Part Number	A AVG Pitch	Average Ultimate Strength (pounds)	WHC* Average Ultimate Strength (pounds)	B Sidebar Height	C Sidebar Thickness	D Rivet Diameter	E Overall Width	F Length of Bearing	G Max. Sprocket Thickness	Links per Foot	AVG Weight per Foot (pounds)
WD102	5.000	51,000	61,000	1 1/2	3/8	3/4	9 1/4	7 3/4	6 3/8	2.4	12
WD104	6.000	51,000	61,000	1 1/2	3/8	3/4	6 3/4	5 3/8	4 1/8	2	8.6
WD110	6.000	51,000	61,000	1 1/2	3/8	3/4	11 3/4	10 1/4	9	2	12
WD112	8.000	51,000	61,000	1 1/2	3/8	3/4	11 3/4	10 1/4	9	1.5	10
WD116	8.000	55,000	69,000	1 3/4	3/8	3/4	15 1/2	14 1/8	13	1.5	12.9
WD118	8.000	85,000	102,000	2	1/2	7/8 or 1	16 3/8	14 7/8	13 1/4	1.5	18
WD118XHD	8.000	122,000	146,000	2	5/8	1	17 3/8	15 1/8	13 1/4	1.5	21
WD120	6.000	85,000	102,000	2	1/2	7/8 or 1	12	10 1/4	8 3/4	2	18
WD120XHD	6.000	122,000	146,000	2	5/8	1	12 3/4	10 1/2	8 3/4	2	21
WD122	8.000	85,000	102,000	2	1/2	7/8 or 1	12	10 1/4	8 3/4	1.5	15
WD122XHD	8.000	125,000	150,000	2	5/8	1	12 3/4	10 1/2	8 3/4	1.5	17.6
WD480	8.000	85,000	102,000	2	1/2	7/8 or 1	14 1/2	12 3/4	11	1.5	16.9
WD480XHD	8.000	122,000	146,000	2	5/8	1	15 1/4	13	11	1.5	19.5

All dimensions shown in inches unless noted otherwise.

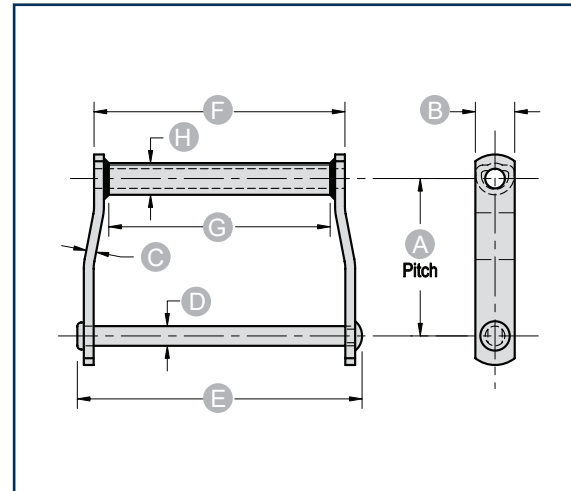
\*WDH denotes Heat-Treated

## "Super" Drag Chain

Using select grade alloy steels these heavy duty chains are manufactured in North America to high standards. Our unique barrel forming process ensures consistent quality, reducing potential rivet wear and providing high strength and long service life.

The Super series chain features a formed barrel of heavy wall tubing for severe applications, ideal for extra heavy loads associated with hog conveyors or "Load" chip dumping.

All heat treating and attachment options are available, as well as reverse barrel design.



Part Number	A	Ultimate Strength (pounds)	WHC* Average Ultimate Strength (pounds)	B	C	D	E	F	G	Links per Foot	AVG Weight per Foot (pounds)
WD118SM	8.000	85,000	120,000	2	1/2	1	16 5/8	14 7/8	13 1/4	1.5	20.8
WD118XHDSM	8.000	125,000	150,000	2	5/8	1	17 3/8	15 1/8	13 1/4	1.5	24
WD120SM	6.000	85,000	120,000	2	1/2	1	12	10 1/4	8 3/4	2	19.5
WD120XHDSM	6.000	125,000	150,000	2	5/8	1	12 3/4	10 1/2	8 3/4	2	24
WD122SM	8.000	85,000	120,000	2	1/2	1	12	10 1/4	8 3/4	1.5	17.5
WD122XHDSM	8.000	125,000	150,000	2	5/8	1	12 3/4	10 1/2	8 3/4	1.5	20
WD480SM	8.000	85,000	120,000	2	1/2	1	14 1/2	12 3/4	11	1.5	20
WD480XHDSM	8.000	125,000	150,000	2	5/8	1	15 1/4	13	11	1.5	23

All dimensions shown in inches unless noted otherwise.

\*WDH denotes Heat-Treated

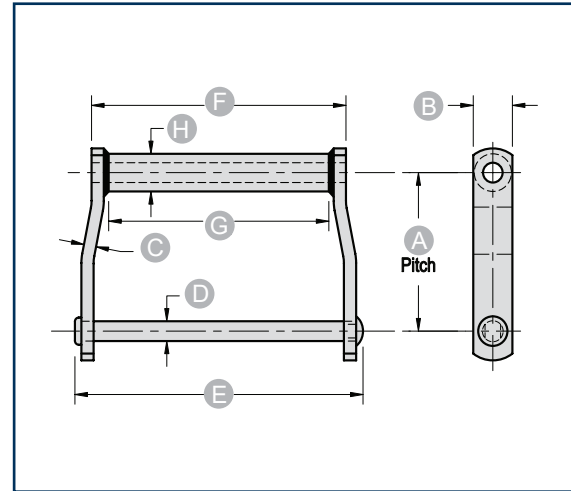
## "Mega" Drag Chain

Using select grade alloy steels, these heavy duty chains are manufactured in North America to high standards.

The Mega series chain features a extra heavy .400" round barrel for the most severe applications. Ideal for extra heavy loads, large logs or any application prone to high impact leading to crushed barrels.

All heat treating and attachment options are available.

- Standard through-hardened rivets
- Available with additional induction hardened rivets



Part Number	A AVG Pitch	Ultimate Strength (pounds)	WDH* Ultimate Strength (pounds)	B Sidebar Height	C Sidebar Thickness	D Rivet Diameter	E Overall Width	F Length of Bearing	G Max. Sprocket Thickness	Links per Foot	AVG Weight per Foot (pounds)
WD118MM	8.000	85,000	120,000	2	1/2	1	16 5/8	14 7/8	13 1/4	1.5	23
WD118XHDMM	8.000	125,000	150,000	2	5/8	1	17 3/8	15 1/8	13 1/4	1.5	26
WD120MM	6.000	85,000	120,000	2	1/2	1	12	10 1/4	8 3/4	2	24
WD120XHDMM	6.000	125,000	150,000	2	5/8	1	12 3/4	10 1/2	8 3/4	2	27
WD122MM	8.000	85,000	120,000	2	1/2	1	12	10 1/4	8 3/4	1.5	20
WD122XHDMM	8.000	125,000	150,000	2	5/8	1	12 3/4	10 1/2	8 3/4	1.5	22
WD480MM	8.000	85,000	120,000	2	1/2	1	14 1/2	12 3/4	11	1.5	22.5
WD480XHDMM	8.000	125,000	150,000	2	5/8	1	15 1/4	13	11	1.5	25

All dimensions shown in inches unless noted otherwise.

\*WDH denotes Heat-Treated

# WELDED STEEL CHAIN ATTACHMENTS



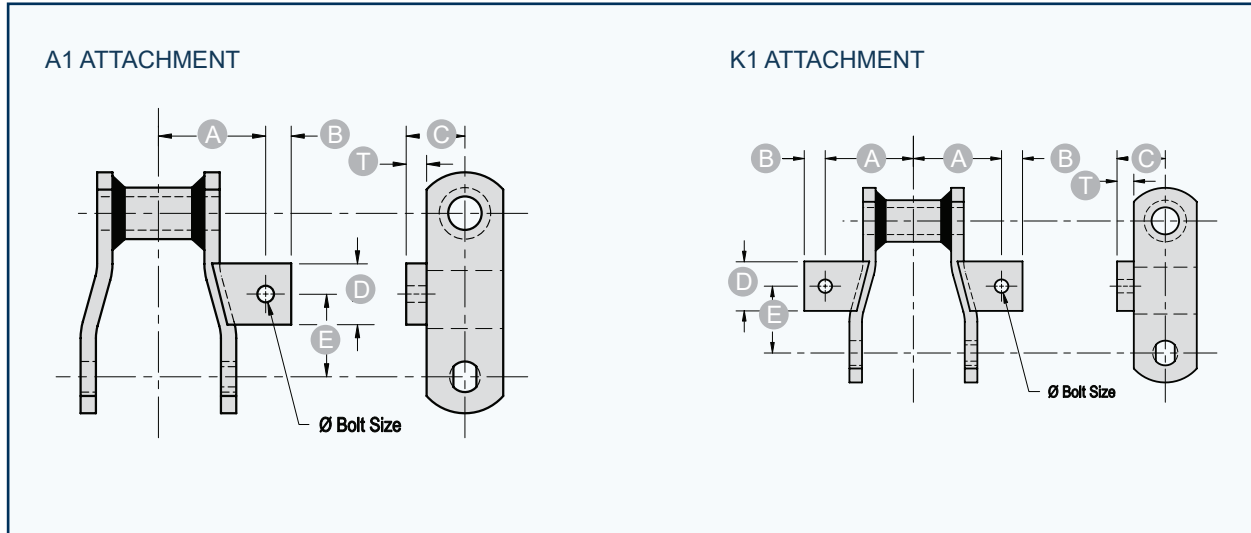
HEADQUARTERS 514.886.5270

12985 Rue Brault, Mirabel Quebec, Canada J7J 0W2

[UNIKINGCANADA.COM](http://UNIKINGCANADA.COM)

## A1 + K1

Welded Steel Chain Attachments are recommended for most conveying and elevating applications in which a high strength steel rollerless chain is required. Optional heat treatment make them easily adaptable to a wide variety of applications.

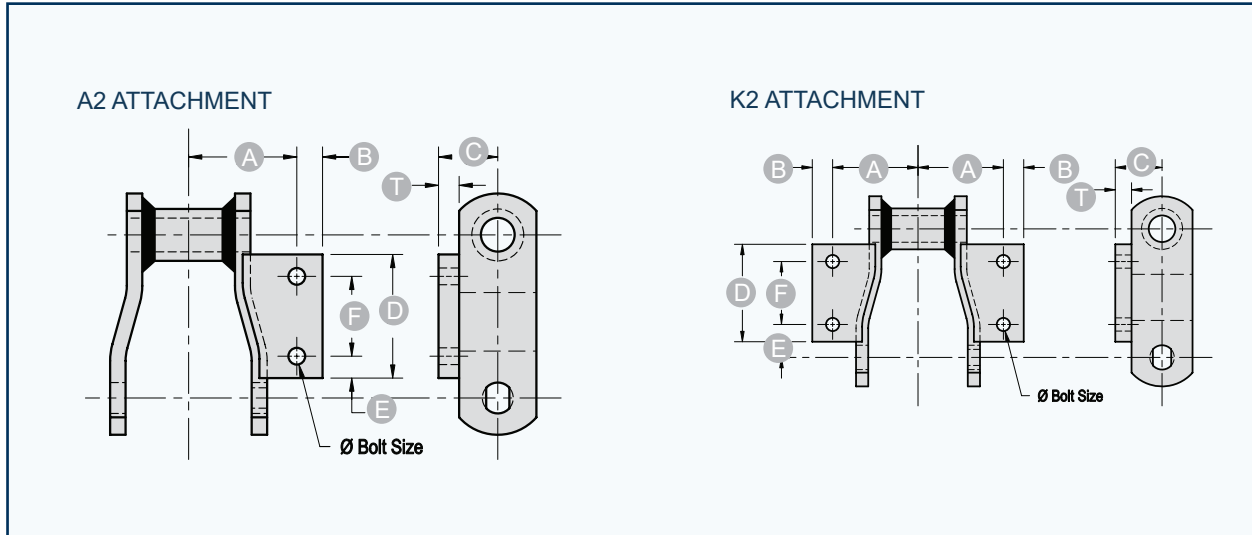


Part Number	For Chain Number	A	B	C	D	E	T	Ø Bolt Size
A1-WR78 K1-WR78	WR78	2	1/2	7/8	1 1/4	1 1/4	1/4	3/8
A1-WR78XHD K1-WR78XHD	WR78XHD	2	1/2	7/8	1 1/4	1 1/4	1/4	3/8
A1-WR82 K1-WR82	WR82	2 1/8	5/8	7/8	1 1/4	1 1/2	1/4	3/8
A1-WR82XHD K1-WR82XHD	WR82XHD	2 3/8	5/8	1 1/8	1 1/4	1 1/2	3/8	3/8
A1-WR124 K1-WR124	WR124	2 3/8	5/8	1 1/8	1 1/2	2	3/8	3/8
A1-WR124XHD K1-WR124XHD	WR124XHD	2 3/8	3/4	1 1/2	1 1/2	2	1/2	1/2
A1-WR111 K1-WR111	WR111	3 1/8	5/8	1 1/4	1 3/4	2 1/8	3/8	3/8
A1-WR132 K1-WR132	WR132	3 3/4	7/8	1 1/2	2	3	1/2	1/2
A1-WR132XHD K1-WR132XHD	WR132XHD	3 3/4	7/8	1 1/2	2	3	1/2	1/2

All dimensions shown in inches unless noted otherwise.



A2 + K2

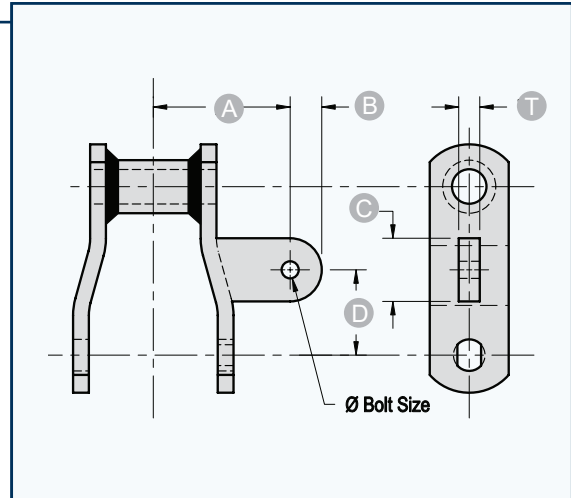


Part Number	For Chain Number	A	B	C	D	E	F	T	Ø Bolt Size
A2-WR78 K2-WR78	WR78	2	1/2	7/8	2	13/16	1 1/8	1/4	3/8
A2-WR78XHD K2-WR78XHD	WR78XHD	2	1/2	7/8	2	13/16	1 1/8	1/4	3/8
A2-WR82 K2-WR82	WR82	2 1/8	5/8	7/8	2 1/4	1/2	1 1/4	1/4	3/8
A2-WR82XHD K2-WR82XHD	WR82XHD	2 3/8	5/8	1 1/8	2 1/4	1/2	1 1/4	3/8	3/8
A2-WR124 K2-WR124	WR124	2 5/8	5/8	1 1/8	3	1	1 15/16	3/8	3/8
A2-WR124XHD K2-WR124XHD	WR124XHD	2 5/8	3/4	1 1/2	3	1	1 15/16	1/2	1/2
A2-WR111 K2-WR111	WR111	3 1/8	5/8	1 1/4	3 1/2	13/16	2 5/16	3/8	3/8
A2-WR132 K2-WR132	WR132	3 3/4	13/16	1 1/2	4	1 5/8	2 3/4	1/2	1/2
A2-WR132XHD K2-WR132XHD	WR132XHD	3 3/4	13/16	1 1/2	4	1 5/8	2 3/4	1/2	1/2
A2-WR150 A2-WR150	WR150	3 3/4	13/16	1 3/4	4	1 5/8	2 3/4	1/2	1/2
A2-WR157 A2-WR157	WR157	3 3/4	13/16	1 3/4	4	1 5/8	2 3/4	1/2	1/2

All dimensions shown in inches unless noted otherwise.



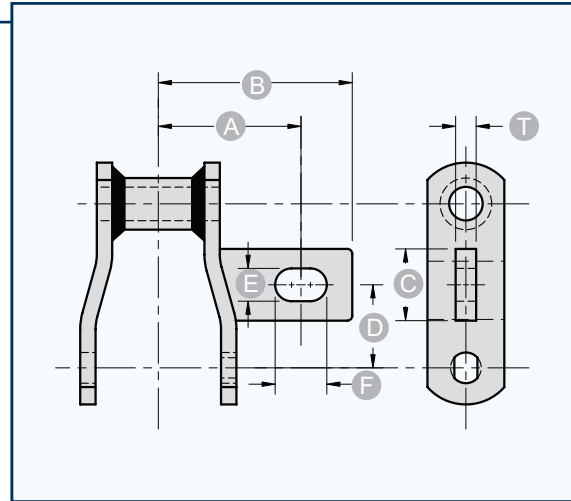
## A22



Part Number	For Chain Number	A	B	C	D	T	Ø Bolt Size
A22-WR78	WR78	2	$\frac{5}{8}$	$1 \frac{1}{4}$	$1 \frac{1}{4}$	$\frac{1}{4}$	$\frac{3}{8}$
A22-WR82	WR82	$2 \frac{1}{2}$	$\frac{5}{8}$	$1 \frac{1}{4}$	$1 \frac{1}{2}$	$\frac{1}{4}$	$\frac{3}{8}$
A22-WR124	WR124	3	$\frac{7}{8}$	$1 \frac{3}{4}$	2	$\frac{3}{8}$	$\frac{1}{2}$
A22-WR111	WR111	$3 \frac{1}{2}$	$\frac{7}{8}$	$1 \frac{3}{4}$	$2 \frac{3}{8}$	$\frac{3}{8}$	$\frac{1}{2}$
A22-WR106	WR106	$2 \frac{3}{4}$	$\frac{7}{8}$	2	3	$\frac{3}{8}$	$\frac{1}{2}$
A22-WR132	WR132	$4 \frac{1}{4}$	1	2	3	$\frac{1}{2}$	$\frac{3}{4}$

All dimensions shown in inches unless noted otherwise.

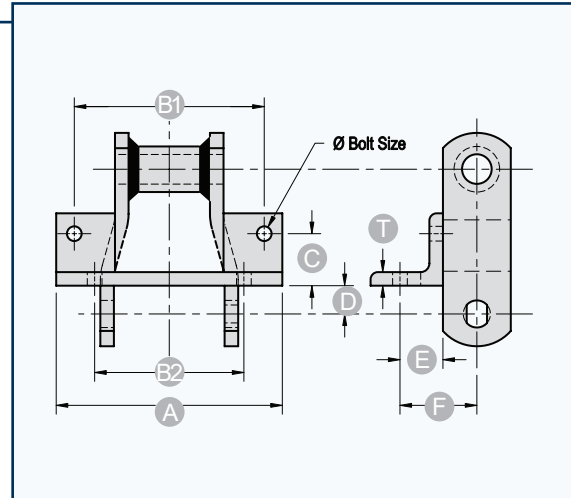
Slotted A22



Part Number	For Chain Number	A	B	C	D	E	F	T
Slotted A22-WR82	WR82	2 1/2	3 1/2	1 1/2	1 1/2	9/16	1 1/4	3/8
Slotted A22-WR124	WR124	4	5 5/16	2	1 3/4	13/16	1 1/2	1/2
Slotted A22-WR144	WR144	4	5 5/16	2	1 3/4	13/16	1 1/2	1/2
Slotted A22-WR106	WR106	4	5 5/16	3	3	13/16	1 1/2	1/2
Slotted A22-WR106XHD	WR106XHD	4	5 5/16	3	3	13/16	1 1/2	1/2
Slotted A22-WR166	WR166	4	5 5/16	3	3	13/16	1 1/2	1/2
Slotted A22-WR132	WR132	4 1/2	6 1/4	3	3	13/16	1 1/2	1/2
Slotted A22-WR132XHD	WR132XHD	4 3/4	6 1/2	3	3	13/16	1 1/2	1/2

All dimensions shown in inches unless noted otherwise.

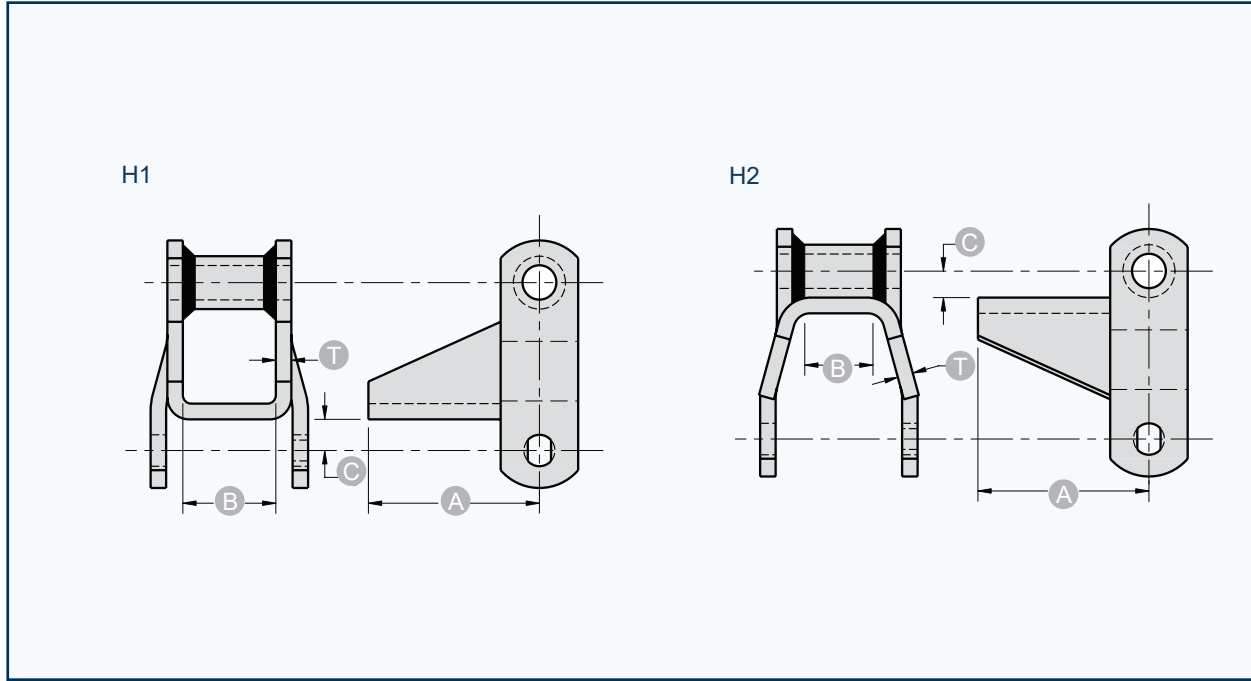
## F2/F4



Part Number	For Chain Number	A	B1	B2	C	D	E	F	T	Ø Bolt Size
F2-WR78 F4-WR78	WR78	5 ½	4 ½	3 ¾	1 ¼	¾	1 ⅛	1 ¾	¼	⅜
F2-WR78XHD F4-WR78XHD	WR78XHD	5 ½	4 ½	3 ¾	1 ¼	¾	1 ⅛	1 ¾	¼	⅜
F2-WR82 F4-WR82	WR82	5 ⅞	5	4 ⅞	1 ¼	⅝	1 ⅛	1 ¾	¼	⅜
F2-WR82XHD F4-WR82XHD	WR82XHD	5 ⅞	5	4 ⅞	1 ½	⅞	1 ⅛	1 ¾	⅜	⅜
F2-WR124 F4-WR124	WR124	6 ¼	5 ¼	4 ¾	1 ½	1	1 ¾	2 ¾	⅜	⅜

All dimensions shown in inches unless noted otherwise.

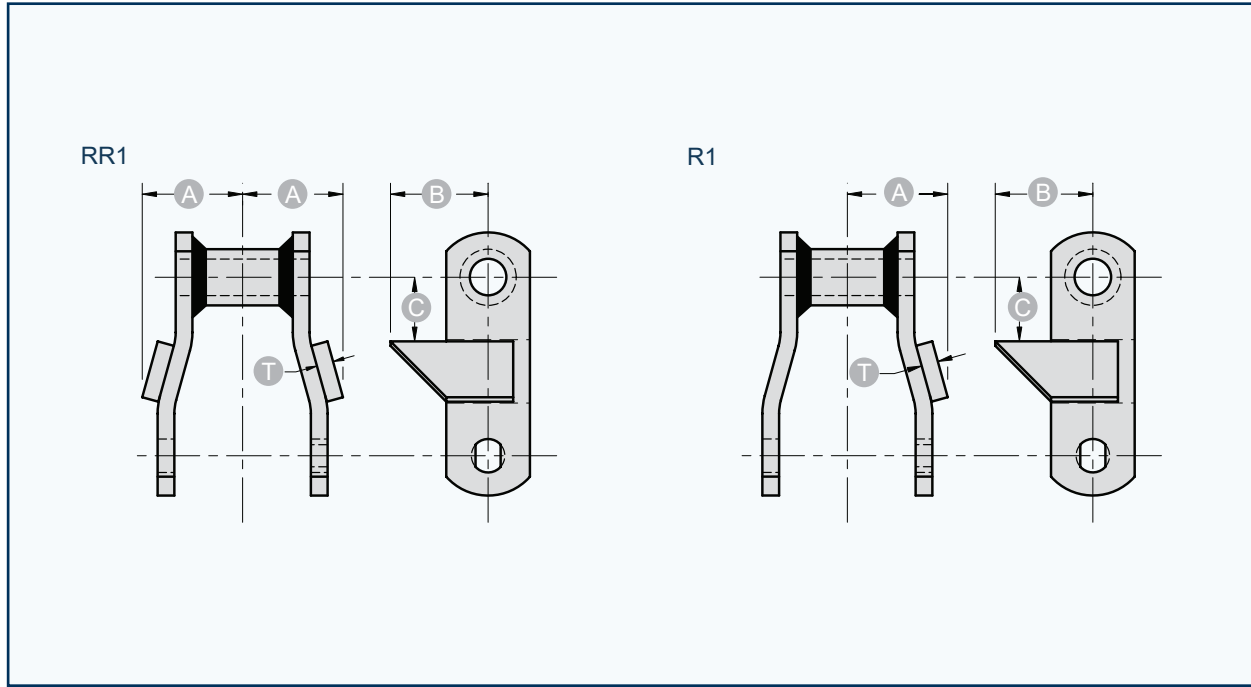
H1/H2



Part Number	For Chain Number	A	B	C	T
H1-WR78 H2-WR78	WR78	3 5/8	1 1/2	1/2	1/4
H1-WR78XHD H2-WR78XHD	WR78XHD	3 5/8	1 1/2	1/2	3/8
H1-WR82 H2-WR82	WR82	3 5/8	1 3/4	5/8	1/4
H1-WR82XHD H1-WR82XHD	WR82XHD	3 5/8	1 3/4	5/8	3/8

All dimensions shown in inches unless noted otherwise.

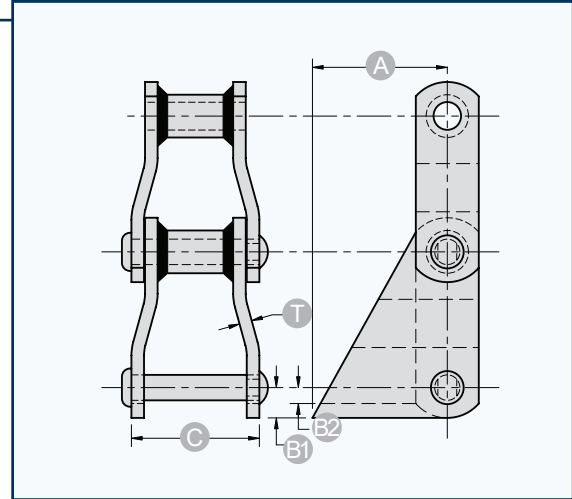
RR1 + R1 \_\_\_\_\_



Part Number	For Chain Number	A	B	C	T
RR1-WR78 R1-WR78	WR78	1 1/2	1 9/16	5/8	1/4
RR1-WR78XHD R1-WR78XHD	WR78XHD	1 3/4	1 9/16	5/8	1/4
RR1-WR82 R1-WR82	WR82	1 5/8	1 3/4	13/16	1/4
RR1-WR82XHD R1-WR82XHD	WR82XHD	1 15/16	2 1/16	13/16	3/8
RR1-WR124 R1-WR124	WR124	2 5/32	1 7/8	1 1/2	3/8
RR1-WR132 R1-WR132	WR132	3 3/32	2 1/2	1 1/2	1/2

All dimensions shown in inches unless noted otherwise.

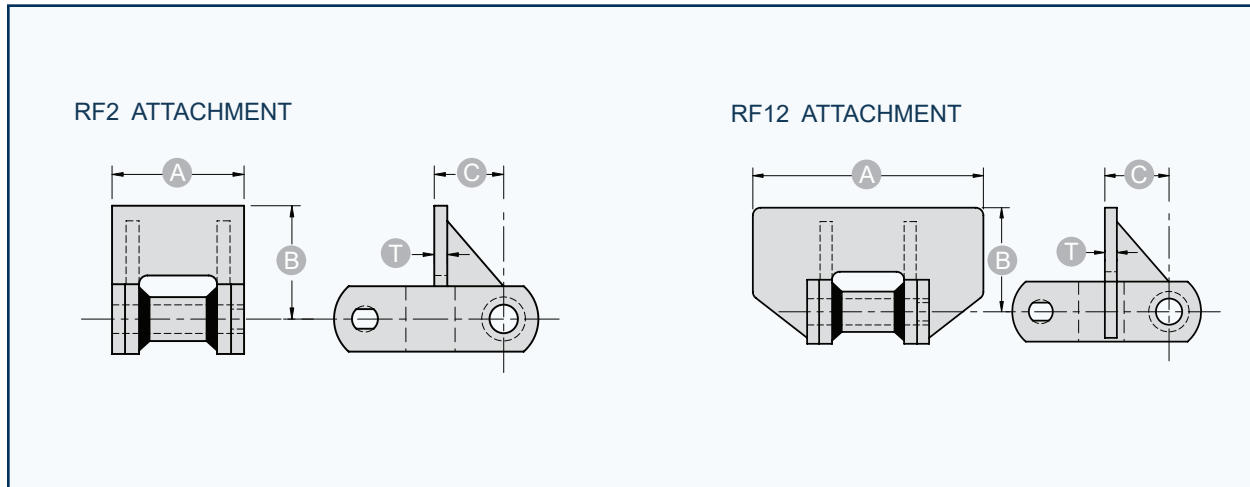
S1/S2



Part Number	For Chain Number	A	B1	B2	C	T
S1-WR124 S2-WR124	WR124	3 <sup>3</sup> / <sub>4</sub>	<sup>7</sup> / <sub>8</sub>	<sup>11</sup> / <sub>16</sub>	3 <sup>5</sup> / <sub>8</sub>	<sup>3</sup> / <sub>8</sub>
S1-WR124XHD S2-WR124XHD	WR124XHD	3 <sup>3</sup> / <sub>4</sub>	1 <sup>1</sup> / <sub>8</sub>	<sup>7</sup> / <sub>8</sub>	4 <sup>1</sup> / <sub>8</sub>	<sup>1</sup> / <sub>2</sub>
S1-WR111 S2-WR111	WR111	4	1	1	4 <sup>3</sup> / <sub>16</sub>	<sup>3</sup> / <sub>8</sub>
S1-WR106 S2-WR106	WR106	3 <sup>3</sup> / <sub>4</sub>	<sup>7</sup> / <sub>8</sub>	<sup>11</sup> / <sub>16</sub>	3 <sup>5</sup> / <sub>8</sub>	<sup>3</sup> / <sub>8</sub>
S1-WR132 S2-WR132	WR132	5	1 <sup>1</sup> / <sub>8</sub>	<sup>7</sup> / <sub>8</sub>	5 <sup>7</sup> / <sub>16</sub>	<sup>1</sup> / <sub>2</sub>
S1-WR150 S2-WR150	WR150	5 <sup>1</sup> / <sub>2</sub>	<sup>7</sup> / <sub>8</sub>	<sup>1</sup> / <sub>2</sub>	5 <sup>7</sup> / <sub>16</sub>	<sup>1</sup> / <sub>2</sub>

All dimensions shown in inches unless noted otherwise.

RF2 + RF12



Part Number	For Chain Number	A	B	C	T
RF2-WR78 RF12-WR78	WR78	3	2 1/16	5/8	1/4
RF2-WR78XHD RF12-WR78XHD	WR78XHD	3	2 1/16	5/8	3/8
RF2-WR82XHD RF12-WR82XHD	WR82XHD	3 1/4	2 3/4	13/16	3/8
RF2-WR124 RF12-WR124	WR124	4 1/4	3 1/4	13/16	3/8
RF2-WR131 RF12-WR131	WR131	6 1/2	3 1/4	1 1/2	1/2
RF2-WR111 RF2-WRC111 RF12-WR111 RF12-WRC111	WR111 WRC111	7 3/4	3 1/4	1 1/2	1/2
RF2-WR132 RF2-WRC132 RF12-WR132 RF12-WRC132	WR132 WRC132	9	3 1/2	1 1/2	3/4
RF2-WR150 RF2-WRC150 RF12-WR150 RF12-WRC150	WR150 WRC150	9	3 1/2	1 1/2	3/4

All dimensions shown in inches unless noted otherwise.



# CHAIN + ATTACHMENTS

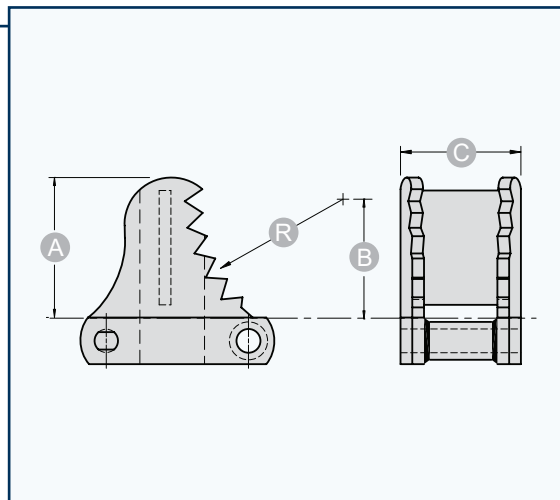


HEADQUARTERS 514.886.5270

12985 Rue Brault, Mirabel Quebec, Canada J7J 0W2

[UNIKINGCANADA.COM](http://UNIKINGCANADA.COM)

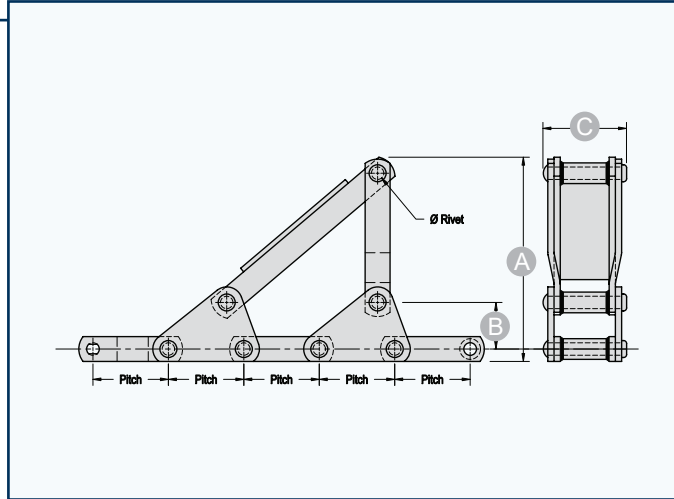
# Slasher Flight



Part Number	For Chain Number	A	B	C	R
Slasher Flight-WR124	WR124	7 <sup>3</sup> / <sub>16</sub>	6 <sup>1</sup> / <sub>4</sub>	3 <sup>5</sup> / <sub>8</sub>	12
Slasher Flight-WR124XHD	WR124XHD	6 <sup>15</sup> / <sub>16</sub>	6	4 <sup>1</sup> / <sub>8</sub>	12
Slasher Flight-WR106	WR106	7 <sup>1</sup> / <sub>2</sub>	6	3 <sup>5</sup> / <sub>8</sub>	6
Slasher Flight-WR106XHD	WR106XHD	8	6	4 <sup>1</sup> / <sub>8</sub>	6
Slasher Flight-WR132	WR132	6 <sup>15</sup> / <sub>16</sub>	6	5 <sup>7</sup> / <sub>16</sub>	6
Slasher Flight-WR150	WR150	6 <sup>15</sup> / <sub>16</sub>	6	5 <sup>7</sup> / <sub>16</sub>	6

All dimensions shown in inches unless noted otherwise.

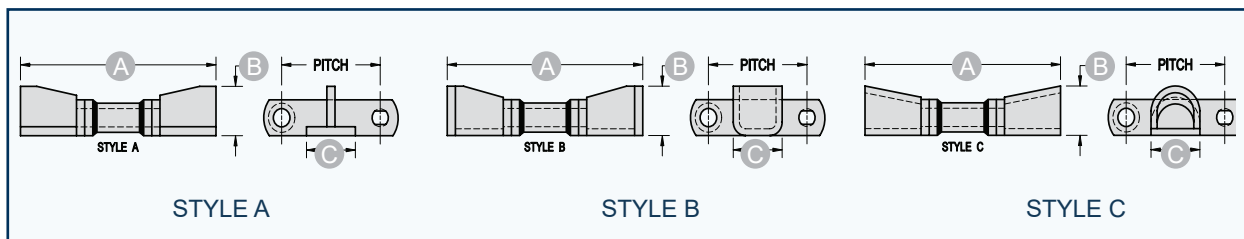
Side Lift Log Chair Assembly



Part Number	For Chain Number	Pitch	A	B	C	Ø Rivet
Side Lift Log Chair Assembly-WR78	WR78	2.609	8 - 14	1 7/8	1 1/4	1/4
Side Lift Log Chair Assembly-WR82	WR82	3.075	10 - 14	1 7/8	1 1/4	1/4
Side Lift Log Chair Assembly-WR124	WR124	4.000	10 - 18	2 7/8	1 1/4	3/8
Side Lift Log Chair Assembly-WR124XHD	WR124XHD	4.050	12 - 18	3	1 1/4	1/4
Side Lift Log Chair Assembly-WR106	WR106	6.000	12 - 20	3 3/4	1 1/4	1/4
Side Lift Log Chair Assembly-WR132	WR132	6.050	12 - 24	3 3/4	1 1/2	3/8
Side Lift Log Chair Assembly-WR132XHD	WR132XHD	6.050	12 - 24	3 3/4	1 1/2	3/8
Side Lift Log Chair Assembly-WR150	WR150	6.050	12 - 24	4	2	1/2
Side Lift Log Chair Assembly-WR157	WR157	6.050	12 - 30	4	1 3/4	3/8

All dimensions shown in inches unless noted otherwise.

## Log Cradles

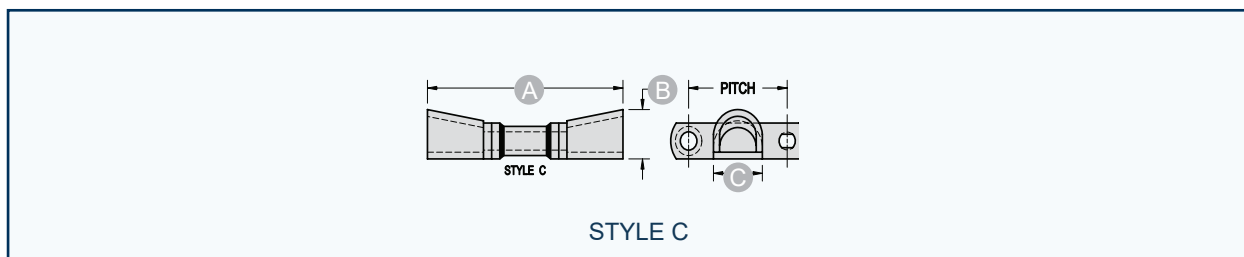


Part Number	For Chain Number	Pitch	A B C			A B C			A B C		
			Style A	Style B	Style C	Style A	Style B	Style C	Style A	Style B	Style C
Log Cradles-WR124	WR124	4.000	8	2 ¼	1 ½	8	2 ½	2 ¼	8	2 ¼	3
Log Cradles-WR124XHD	WR124XHD	4.050	8 ½	3	2 ½	8 ½	3	2 ½	8 ½	2 ¾	3
Log Cradles-WR111	WR111	4.760	8 ½	2 ¼	1 ¾	8 ½	3	2 ¼	8 ½	2 ½	3
Log Cradles-WR106	WR106	6.000	8	2 ¼	3	8	2 ¼	2 ½	8	2 ¼	3
Log Cradles-WR132	WR132	6.050	11	3	3	11	3	3 ¼	11	2 ¾	3 ½
Log Cradles-WR132XHD	WR132XHD	6.050	11 ¼	3	3	11 ¼	3	3 ¼	11 ½	2 ¾	3 ½

All dimensions shown in inches unless noted otherwise.

★ A and B dimensions can easily be altered to meet requirements. Specify A, B and C dimensions when inquiring.

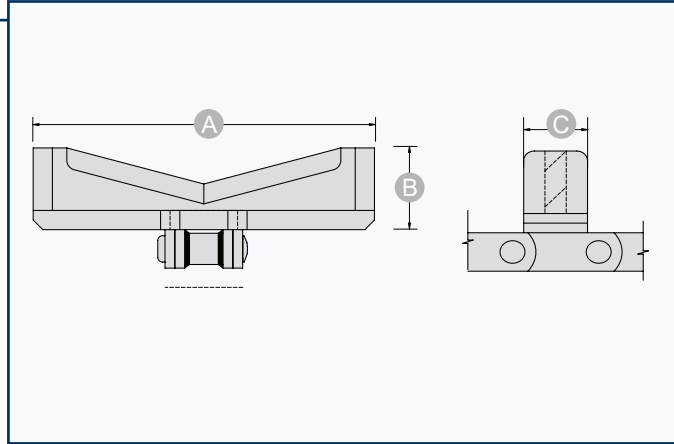
## Special Style C



Part Number	For Chain Number	A B C		
		Style C		
Log Cradles-WR132	WR132	13	3 ½	3 ½
Log Cradles-WR132XHD	WR132XHD	13 ½	3 ½	3 ½

★ A and B dimensions can easily be altered to meet requirements. Specify A, B and C dimensions when inquiring.

Bevelled V-Flight



For Chain Number	For Chain Number	A	B	C
Bevelled V-Flight WR82XHD	WR82XHD	17	3 ½	3
Bevelled V-Flight WR124XHD	WR124XHD	12	3 ½	3

All dimensions shown in inches unless noted otherwise.

★ A and B dimensions can easily be altered to meet requirements. Specify A and B dimensions when inquiring.

# DRAG CHAIN ATTACHMENTS

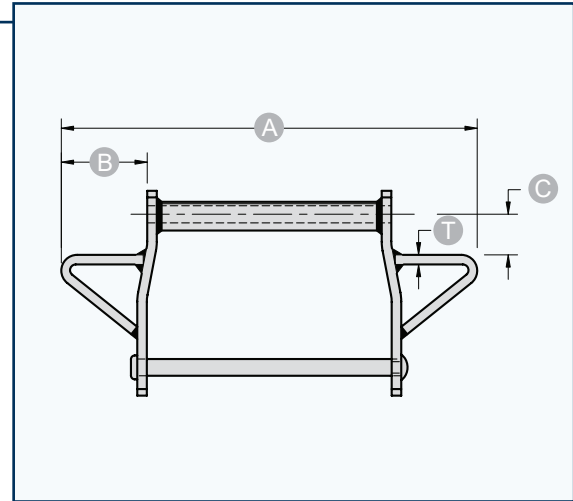


HEADQUARTERS 514.886.5270

12985 Rue Brault, Mirabel Quebec, Canada J7J 0W2

[UNIKINGCANADA.COM](http://UNIKINGCANADA.COM)

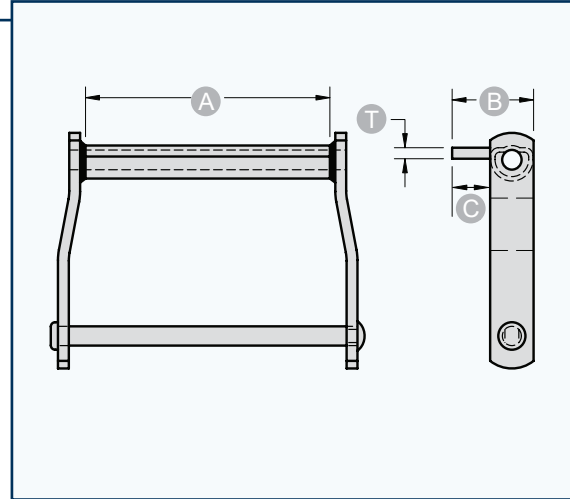
Standard Wing Attachment



Part Number	For Chain Number	A	B	C	T
Standard Wing WD102	WD102	14 ¼	1 ½	1 ½	⅜
Standard Wing WD104	WD104	11 ½	3	1 ¾	⅜
Standard Wing WD110	WD110	17	3 ⅜	1 ¾	⅜
Standard Wing WD112	WD112	17	3 ⅜	1 ¾	⅜
Standard Wing WD116	WD116	22	3 ⅝	2 ½	⅜
Standard Wing WD118	WD118	22	3 ⅞	2 ½	½
Standard Wing WD118XHD	WD118XHD	22 ¼	3 ⅞	2 ½	½
Standard Wing WD120	WD120	17 ½	3 ⅜	1 ¾	½
Standard Wing WD120XHD	WD120XHD	17 ¾	3 ⅜	1 ¾	½
Standard Wing WD122	WD122	17 ½	3 ⅜	2 ½	½
Standard Wing WD480	WD480	22	4 ⅝	2 ½	½
Standard Wing WD480XHD	WD480XHD	22 ¼	4 ⅝	2 ½	½

All dimensions shown in inches unless noted otherwise.

"C" Attachments



For Chain Number	A	B	B	C	B	C	B	C	T
		C1/2*	C1		C3		C4		
WD102	6 1/2	1 1/2	3	1 1/2	3 1/2	2	4 1/2	3	3/8
WD104	4 1/4	1 1/2	3	1 1/2	3 1/2	2	4 1/2	3	3/8
WD110	9	1 1/2	3	1 1/2	3 1/2	2	4 1/2	3	3/8
WD112	9	1 1/2	3	1 1/2	3 1/2	2	4 1/2	3	3/8
WD116	12 7/8	1 3/4	3 1/4	1 1/2	3 3/4	2	4 3/4	3	3/8
WD118	13 3/8	2	3 3/4	1 3/4	4	2	6	4	1/2
WD118XHD	13 3/8	2	3 3/4	1 3/4	4	2	6	4	1/2
WD120	8 3/4	2	3 3/4	1 3/4	4	2	6	4	1/2
WD120XHD	8 3/4	2	3 3/4	1 3/4	4	2	6	4	1/2
WD122	8 3/4	2	3 3/4	1 3/4	4	2	6	4	1/2
WD480	11 1/4	2	3 3/4	1 3/4	4	2	6	4	1/2
WD480XHD	11 1/4	2	3 3/4	1 3/4	4	2	6	4	1/2

All dimensions shown in inches unless noted otherwise.

★ C1/2 attachment is welded to front of barrel. All others are welded on top of barrel.